

# ANNUAL REPORT 18 19

## STÉPHANE ROUSSEAU

10 years supporting cancer research

## STATE OF RESEARCH

A year full of good news

## UPCYCLE

Drug repurposing to outsmart cancer



10  
YEARS  
• SPOKESPERSON OF THE SOCIETY FOR 10 YEARS •



Cancer  
Research Society

# ANNUAL REPORT 18 19

## OUR MISSION HAS REMAINED A STEADY DRIVING FORCE THROUGHOUT OUR HISTORY

The Cancer Research Society is a national non-profit organization whose sole mission is to fund research on all types of cancer to help prevent, detect, and treat this disease.



**MARTIN THIBODEAU**  
Chairman of the Board  
of Directors

## Word from the chairman

It has been almost seven years since I became a member of the Board of Directors of the Cancer Research Society, with three of those as Chairman. As I prepare to pass the torch, it is with great emotion that I look back on the path that was travelled to help advance this cause.

During my tenure, we have instituted a series of philanthropic events distinguished by their uniqueness. We have created and consolidated ties with many partners and have observed an incredible increase in the number of donors across Canada, facts which attest to the confidence that stakeholders have in the Society. We have also seen the creation of innovative and highly promising new fundraising programs, which allow us to further propel the work of the country's best researchers, and have a tangible impact in the field of cancer research.

These impressive scientific advances are indisputable, and for certain types of cancer, the results are spectacular. Despite this, there is still a long way to go in eradicating this complex disease which affects 1 in 2 Canadians.

In closing, I would like to thank the greater family of the Cancer Research Society and each donor for their support, as well as all of the administrators of the Board of Directors who have aided me in ensuring this cause gets the support it deserves.

And so, it is with a note of hope that I encourage you to continue the mission to outsmart cancer!

A handwritten signature in black ink, appearing to read "Martin Thibodeau".

## Word from our ceo



**MANON PEPIN**  
President and Chief  
Executive Officer

A few months ago, I made the decision to join the Cancer Research Society, and am very proud to take part in its mission and contribute to its development.

Here, I have encountered a dynamic and dedicated team. I have also discovered the skill and perseverance of researchers across the country who strive to outsmart cancer by any means. And I have witnessed the incredible involvement of hundreds of thousands of Canadians and invaluable partners who contribute to the financing of these innovative research projects.

The Society is a leader in the field of cancer research thanks to our focus on optimizing methods of prevention and detection, and ultimately developing more effective therapies and medications. Without a doubt, this approach leads to improved survival rates for all types of cancer. We must therefore continue along this path.

I would like to offer my sincere thanks to Martin Thibodeau, our current Chairman of the Board of Directors, who is ending his tenure within our organization. Mr. Thibodeau is exceptional for his engagement and his dedication to developing an organization that brings hope to many.

I would also like to express our appreciation for Stéphane Rousseau, our spokesperson for the past ten years. His continued involvement and his authenticity have immense significance for the promotion of our mission.

On the eve of our 75th anniversary, I am excited for the coming year during which many new cancer research projects will be put forward and financed. It will also be an occasion to highlight the impact of entire generations of outstanding researchers and the contributions of generous donors, partners and volunteers.

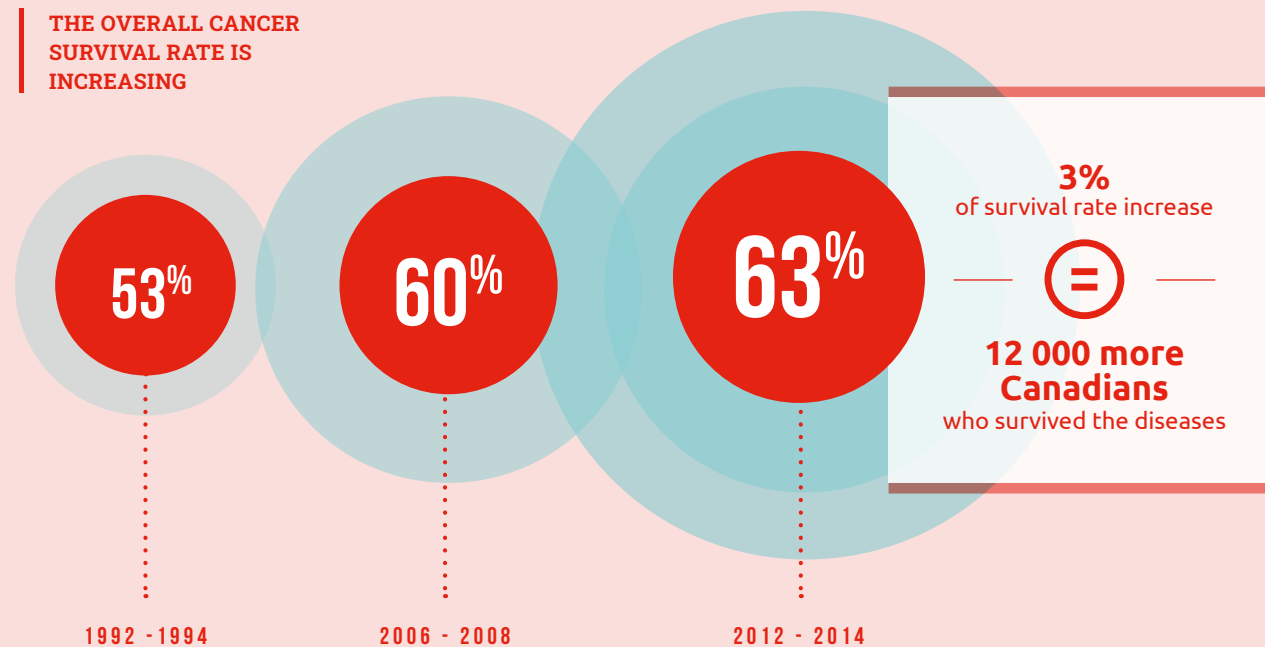
Together, let's support research to outsmart cancer!

A handwritten signature in black ink, appearing to read "Manon Pepin".

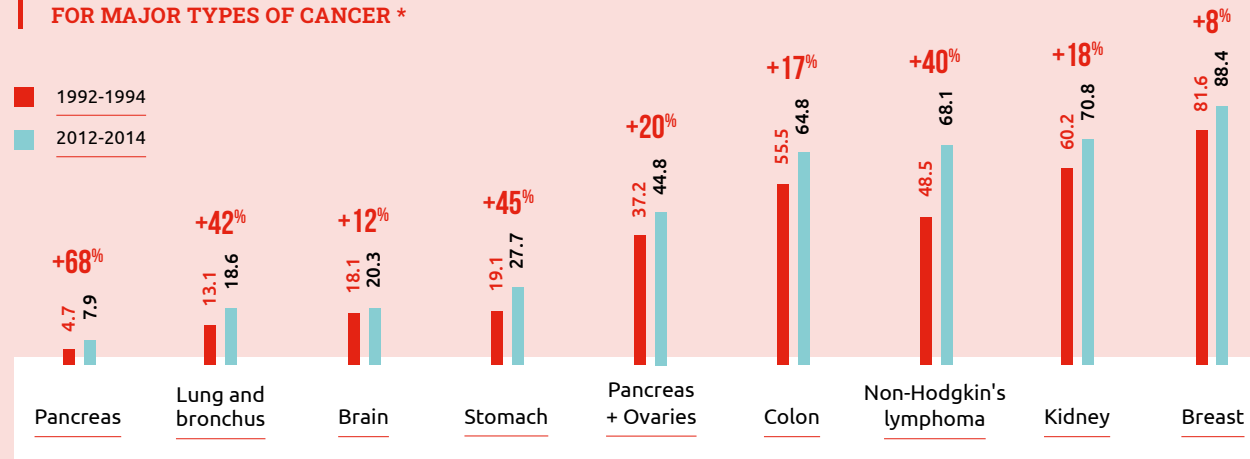
# Continued Progress

There are no small victories in the battle against cancer. Every increase in survival rates, equals thousands of lives saved.

THE OVERALL CANCER SURVIVAL RATE IS INCREASING



CANCER SURVIVAL RATES IMPROVEMENTS FOR MAJOR TYPES OF CANCER \*



\* Sources: Canadian Statistics on Cancer

# Research that changes lives

This year, we asked our donors to tell us their story with cancer. We were inspired by the hundreds of stories we received. They highlight the impact your support to research has on our community.

“ ”

Over three years ago, I was diagnosed with colon cancer. Today, the results of my follow-up tests are normal. This experience has certainly changed my life, because now, I consider each new day as a gift of life. What a blessing it is to be able to breathe and enjoy nature!

— MICHEL

“ ”

It's a silent killer. I am currently undergoing treatment for an ovarian cancer which was detected by chance, as I was taking a scan for kidney stones. I did not have any symptoms and had just had my annual gynecology checkup. At that time, my doctor did not see anything. I had a lot of luck that this cancer was discovered coincidentally, otherwise, it would have been too late.

— JOHANNE

“ ”

In 2000, I was diagnosed with kidney cancer. Because the tumour was malignant, my right kidney had to be removed. I have now been very well for 19 years. I am grateful for all the extraordinary research and physicians who gave me a second chance.

— CARMEN

“ ”

I lost both my mother and my father to cancer. I miss them so much. I was a single child and I stayed with them until the very end. I don't regret anything, and this is why I support cancer research.

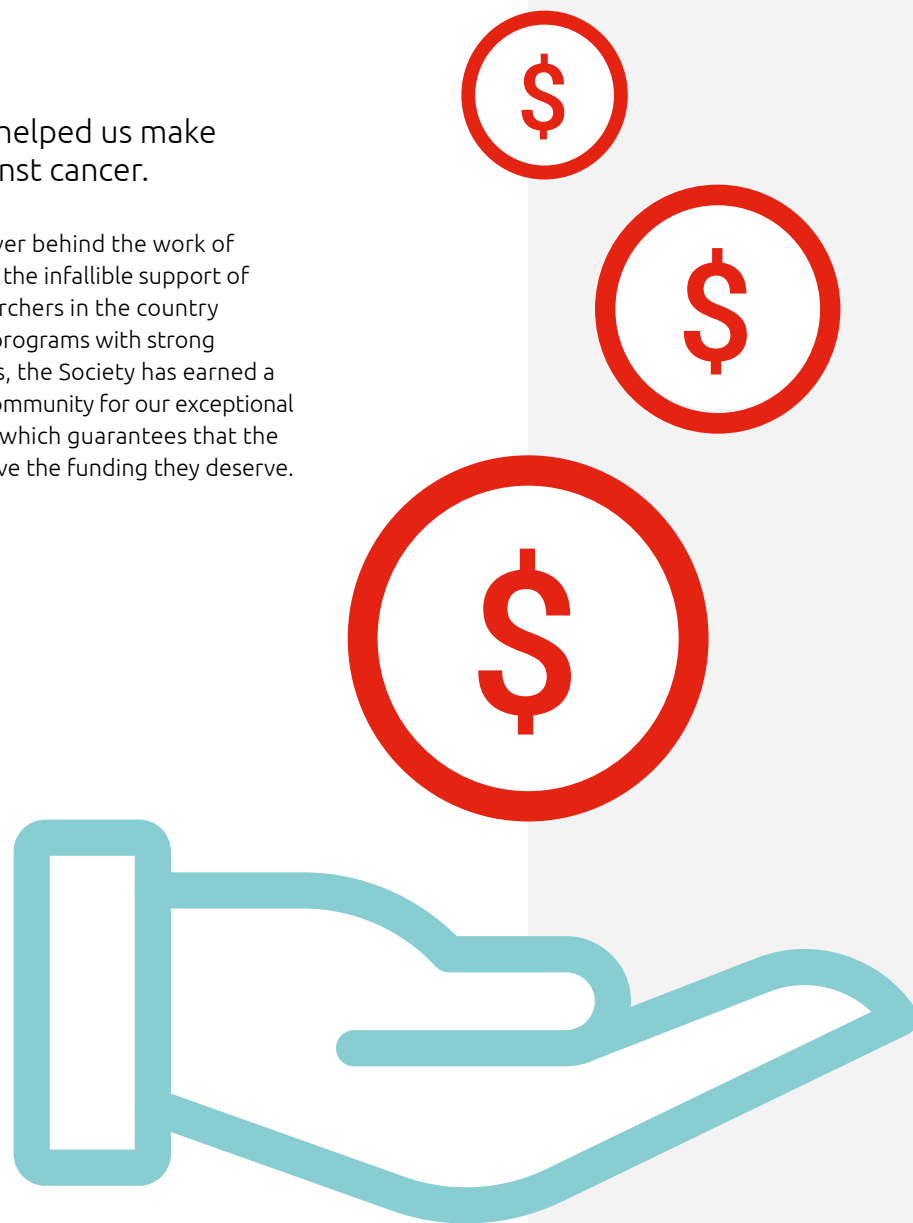
— LINDA

## State of research

# A year full of good news

Learn how your support has helped us make giant strides in the fight against cancer.

Public engagement is the principal driver behind the work of the Cancer Research Society. Thanks to the infallible support of Canadians, we finance the finest researchers in the country through a series of promising funding programs with strong potential impact. Throughout the years, the Society has earned a solid reputation among the scientific community for our exceptional quality and rigorous selection process, which guarantees that the most promising research projects receive the funding they deserve.



## Our Research Investment

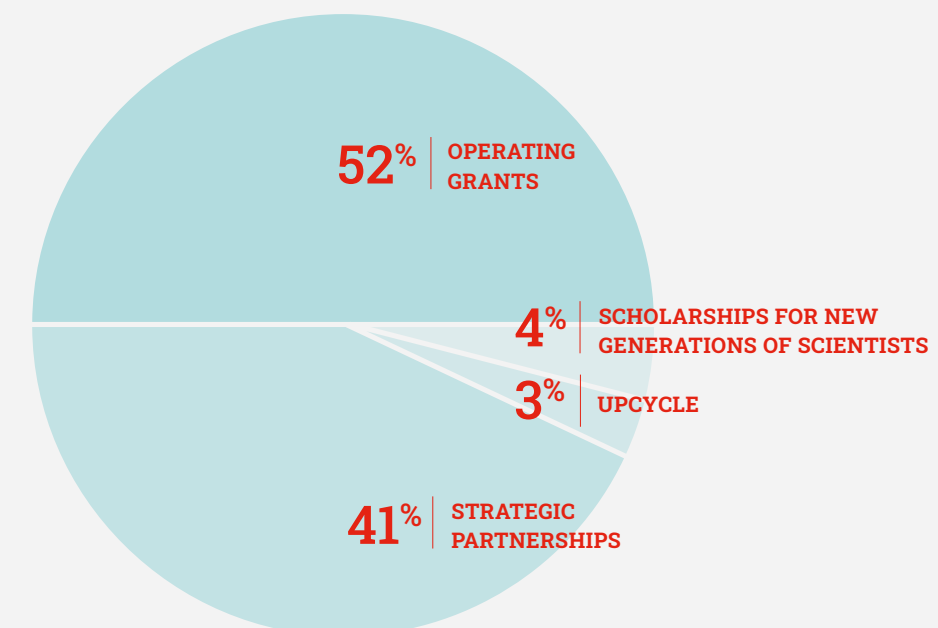
PRESENT ACROSS CANADA,  
THANKS TO YOU



### OUR RESEARCH PROGRAMS

In 2019, the Cancer Research Society financed four research programs. More than half of the funds were allocated to support operating grants for basic research projects across Canada.

Significant investments have also been made through strategic partnerships with financial contributions from other granting agencies for key projects in applied and translational research. This year also marked the start of the UpCycle Drug Repositioning program with five new grants. Finally, we continue to encourage young researchers with additional Scholarships for the Next Generation of Scientists.





# Francis Rodier



## The "One-two punch" approach

### OVARIAN CANCER BREAKTHROUGHS



**3,000**  
new diagnoses in 2019



**1,900**  
deaths in 2019



**45%**  
survival rate after 5 years

"In the case of epithelial ovarian cancer – the most common and lethal ovarian cancer – we act in two stages.

First, we force the cancer cells to age prematurely i.e., we force them into senescence. This is the first therapeutic punch. We then throw our second punch using senolysis, destroying and eliminating them. This strategy requires excellent coordination of the two steps.

Given the importance of the immune response in humans, we need to continue evaluating our strategy in a context closer to biological reality."

**FRANCIS RODIER**  
Université de Montréal



# Kristan Aronson



## Better work policies for female night shift workers

"Getting a diagnosis of cancer is shocking.

By funding research that identifies the causes of cancer, the Cancer Research Society is working towards reducing the number of cancer diagnoses in Canada.

For example, breast cancer risk is elevated among many women who work at night over several years – the Cancer Research Society has made it possible for us to explore environmental and genetic mechanisms that link night work with disruption of sleep rhythms to breast cancer risk.

Funding from the Cancer research Society allows us to include front-line health care workers directly in our research – and with these working women, we can conduct valuable research that ultimately will contribute to reducing cancer risk.

We thank all Cancer research Society donors and study participants, without whom this research would not be possible."

**KRISTAN ARONSON**  
Queen's University

### BREAST CANCER BREAKTHROUGHS

**26,900**  
new diagnoses in 2019



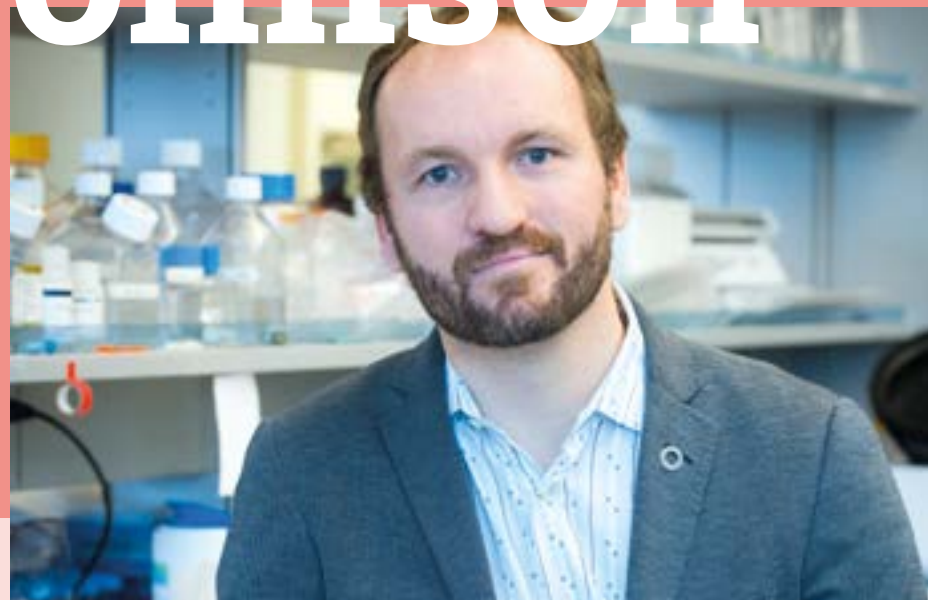
**5,000**  
deaths in 2019



**88%**  
survival rate after 5 years



# James Johnson



## Are high levels of insulin a cause of pancreatic cancer?

### PANCREATIC CANCER BREAKTHROUGHS



**5 800**  
new diagnoses in 2019



**5 200**  
deaths in 2019



**8%**  
survival rate after 5 years

"Pancreatic cancer has an extremely poor prognosis and is expected to rise, driven in large part by the increasing rates of obesity, to become the second leading cause of cancer death by 2030. The Cancer Research Society took an early bet on our project in collaboration with Dr. Janel Kopp (UBC). This project sought to determine the cause and effect relationship between pancreatic cancer incidence and the high levels of insulin the body makes in people who live with obesity and type 2 diabetes. Funding for this research led to a breakthrough in our understanding of the complex relationship between excess insulin levels, diabetes and cancer.

It has helped inform new clinical trials at the Pancreas Centre BC and additional pre-clinical studies to further determine the mechanisms by which high levels of insulin drive the progression of various types of cancer. Our work also provides new support for approaches to prevent cancer via dietary modification and we are working with the non-profit Institute for Personalized Therapeutic Nutrition to implement these into clinical practice."

**JAMES JOHNSON**  
University of British Columbia



# UpCycle:

## A unique avenue full of hope



Over the past year, the Cancer Research Society has financed five promising projects totalling a half million dollars through UpCycle, its program for repurposing drugs for oncology.

**Noël Raynal, a researcher at CHU Sainte-Justine and professor at the Université de Montréal**, is among the first recipients of an UpCycle grant.

### WHY IS A PROGRAM LIKE UPCYCLE IMPORTANT FOR CANCER RESEARCH?

UpCycle is a unique and essential program, and it is the only one in the country that offers possible funding for excellent projects which are less likely to be funded by traditional programs. Those programs give low priority to projects which study known molecules and medications, projects which nevertheless could have strong potential impact for patients.

### TALK TO US ABOUT THE RECENT RESULTS OF YOUR RESEARCH.

Our results, published in an international scientific journal, show for the first time the potential of a drug – generally used to treat cardiac diseases – to also treat aggressive leukemia. We have demonstrated that this drug could be effective against this type of cancer.

### WHAT GIVES YOU HOPE WHEN YOU SEE THE CURRENT RESEARCH IN ONCOLOGY?

The current technological advances in sequencing and in drug development are fascinating. Thanks to this progress, for the first time in history we can target cancer cells while sparing the patient's healthy cells. This means that we can develop more effective and less toxic treatments.

### WHAT WOULD YOU LIKE TO TELL OUR DONORS?

Without the support of donors and the Cancer Research Society, research could not progress as rapidly. The support we receive gives us the means to better understand and especially, better treat all types of cancer. Donations help boost the efforts of research teams reaching for the treatments of the future. On behalf of the patients and their families, a heartfelt thank you to donors for helping us to go further.

# 4

OTHER RESEARCH  
PROJECTS FUNDED  
THROUGH UPCYCLE

**Dr. Steven Chan and his team at the University Health Network in Toronto** are looking at new uses for an antibiotic that treats bacterial infections. They're examining its impact on patients with acute myeloid leukemia (AML), which kills more than 1,000 Canadians every year.

**Dr. Yves Fradet and his team at Université Laval in Quebec City** are focusing on treatments for bladder cancer, the fifth most common cancer in North America. Dr. Fradet is testing new opportunities to replace a current bladder cancer drug with bicalutamide, a similar but older drug that is less expensive.

**Dr. Spencer Gibson and his team at CancerCare Manitoba** have discovered that some antihistamines kill cancer cells without affecting healthy cells. He is investigating if they are effective in chronic lymphocytic leukemia patients who have developed chemotherapy resistance.

**Dr. Carrie Shemanko and her team at the University of Calgary** are looking at all approved existing drugs to identify those able to reduce bone degradation caused by breast cancer metastases.

# Support to the next generation of scientists,



**a formidable weapon  
to outsmart cancer**

ONE RECIPIENT'S  
RETROSPECTIVE:  
SORANA MORRISSY

The Society's Scholarship for the Next Generation of Scientists program helps to ensure the continued quality of research in Canada. Year after year, this unique program identifies the brightest talents among postgraduate students in cancer research and gives them the means to launch their career as a researcher in a Canadian institution. Sorana Morriissy received the Scholarship for the Next Generation of Scientists in 2017–2018. She shares her experience with us.

## WHY DID YOU CHOOSE A CAREER IN CANCER RESEARCH?

I undertook my PhD and my postdoc in hospital research centres. It increased my awareness of the need to find answers that would make a real difference for the people I encountered on a daily basis.

The career of a researcher resembles detective work, with an arsenal of more and more sophisticated tools to understand the workings of the human body and most particularly, what happens when cancer hits. It's intellectually stimulating work that requires creativity and perseverance, especially when one knows how much of a game changer it can be for those who suffer from the disease.

## WHAT DID YOU APPRECIATE MOST ABOUT THE SCHOLARSHIP FOR THE NEXT GENERATION OF SCIENTISTS PROGRAM?

It's the only funding program in Canada that offers significant support for postgraduate researchers to launch their careers. This financial aid gives us room to maneuver and allows us to make it through the long process of searching for an academic appointment.

## HOW DID THE SCHOLARSHIP FOR THE NEXT GENERATION OF SCIENTISTS PROGRAM CONTRIBUTE TO YOUR SCIENTIFIC JOURNEY?

The Scholarship for the Next Generation of Scientists was my very first grant. It helped to finance my first research project and to recruit my first students. It also allowed me to develop one of my lab's main avenues of research. This grant was crucial to the start of my independent program in cancer research.

## WHAT WOULD YOU LIKE TO SAY TO OUR DONORS?

The Scholarship for the Next Generation of Scientists was essential for me at a critical point in my career. It helped me find a job as an independent researcher at the University of Calgary. Following that, I was able to obtain a Canadian Research Chair to bolster my work. Now, I devote some of my time and my resources to train students, my way to pay it forward for the donors who invested in me through the Society. The impact of your donations goes beyond the grant recipient; it creates a domino effect that makes all the difference for the future of cancer research in Canada.



Presenting the  
4 recipients for

# 2019



Kelsie Thu



Mélanie Laurin



Jérôme Fortin



Talía Malagón

## KELSIE THU, UNIVERSITY HEALTH NETWORK, TORONTO

"I decided to enter into cancer research in order to contribute to advances which will bring better treatments and improved survival rates for patients suffering from this terrible disease. My ultimate goal is to improve our biological comprehension of lung cancer in order to find new treatments. My dream is to bring to light and define a new vulnerability in lung cancers that will lead to a new more effective treatment to improve patient survival."

## JÉRÔME FORTIN, UNIVERSITY HEALTH NETWORK, TORONTO

"Two aspects of cancer research really speak to me: first, the possibility of making biological discoveries, and second, the possibility of making a significant impact on treatments, and by the same token, on the lives of thousands of patients and their families. High-grade pediatric brain cancers often come with a grim prognosis, and some are merciless. I dream of making discoveries which will improve survival rates and quality of life for patients, and which ultimately will lead to treatments to eradicate these cancers."

## MÉLANIE LAURIN, ROCKEFELLER UNIVERSITY, UNITED STATES

"Cancer is like a giant puzzle for which no one solution exists, since each patient's cancer has its own biological characteristics. I firmly believe that academic research is the key to improving our comprehension of each type of cancer and developing targeted therapies. The emergence of drug resistance is one of the biggest challenges for treating cancer patients. I'd like to model this resistance and proceed with the screening of thousands of medications to identify compounds and signalling pathways which will allow the development of innovative treatment options."

## TALÍA MALAGÓN, MCGILL UNIVERSITY, MONTREAL

"I was interested in the methods of transmission of infectious diseases. To my great surprise, I discovered that many cancers are caused by viruses. Ever since, I've worked to understand the complex interaction of natural processes from transmission to infection, then to oncogenic progression, as well as the repercussions of preventative measures on public health. My work combines epidemiology and mathematical models to evaluate, on the one hand, the disadvantages and advantages of screening for cervical cancer in an age of youth HPV vaccination, and on the other hand, the risk factors for transmission of the virus between partners."





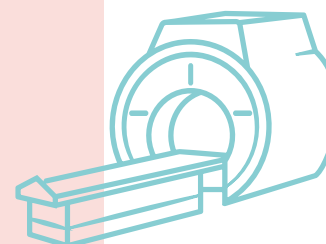
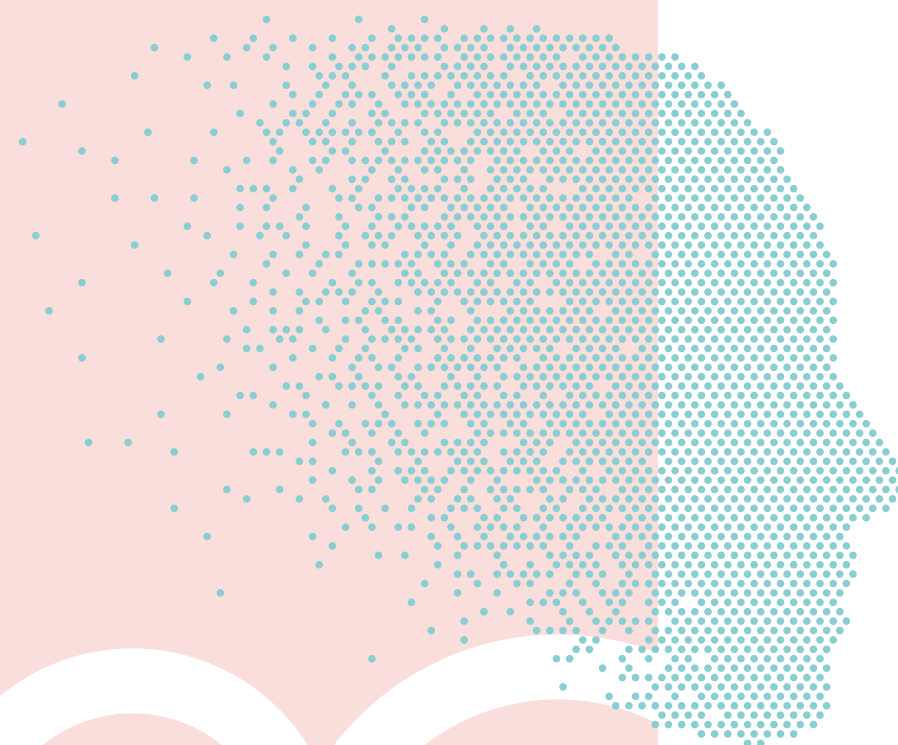
# Our Strategic Partnerships In research, to unite is to go further, faster

Following a year of pilot projects which have confirmed the popularity of strategic partnerships within the scientific community, The Cancer Research Society officially launched its Translational Research Partnership program this year.

This program is a platform which promotes the meeting of multidisciplinary teams and diversified organizations with the goal of accelerating the development of new therapeutic approaches or medical technologies. The program also provides leverage to bring together financial partners around projects of larger magnitudes. These projects, often out of reach

for academic research labs, can be deployed synergistically, bringing to light lesser-known aspects of the disease.

The Cancer Research Society is currently involved in several major partnership projects. These initiatives, representing almost 3 million dollars on the part of the Society, have generated a total investment of more than 24 million dollars with our partners' support.



## New Projects in 2018–2019

### ARTIFICIAL INTELLIGENCE TO DETECT BIOLOGICAL MARKERS INDICATIVE OF LUNG AND LIVER CANCERS.

This project provides for the creation of a collaborative platform that will allow clinicians and experts in artificial intelligence to share their knowledge in order to detect biological markers using diverse types of medical imaging. This initiative has the potential to offer a less invasive and optimized diagnostic tool, while quickly paving the way for more affordable precision medicine for liver and lung cancer patients.

**In partnership with the McGill University Health Centre (MUHC), the Centre de recherche de l'Université de Montréal (CRCHUM), the Mila of the Université de Montréal and the Jewish General Hospital, the Ministère de l'Économie et de l'Innovation du Québec (MEI), MEDTEQ, Imagia, and Mitacs.**

### OTHER CURRENT PROJECTS

- Development of an ultra-powerful scanner to enable early detection of brain tumours, a determining factor in better prognosis.

**In partnership with Université de Sherbrooke, MEI, MEDTEQ, Mitacs, Imaging, Research & Technology (IR&T), Prompt and Novalgo.**

- Seven grants to projects with strong potential impact under Oncopole's Multi-Institutional Teams Against Cancer (EMC2) program, touching on medical imaging, targeted therapies, cancerous stem cells, drug resistance, oncolytic vaccines, and the improvement of health care systems for cancer treatment.

**In partnership with Oncopole, FRQ-S, Merck Canada, Génome Québec, IRICor, and the CQDM.**

- Development of an innovative approach of radiotherapy based on artificial intelligence allowing the better targeting of cancerous tumours of the liver, thereby protecting the surrounding organs.

**In partnership with Polytechnique Montréal, École de technologie supérieure, CRCHUM, MEDTEQ, Elekta and the Institut TransMedtech.**

- Development of new anti-cancer peptides linked to medications for the personalized and targeted treatment of cancer.

**In partnership with the UQAM, MEI, ALIGO Innovation, and Katana Biopharma.**

- Preclinical evaluations of humanized antibodies that target receptors expressed in different cancers.

**In partnership with Université de Sherbrooke, CQDM, Immune Biosolutions, and Mitacs.**



# 10 years supporting cancer research

Interview with Stéphane Rousseau



Stéphane Rousseau has been a committed volunteer of the Cancer Research Society for the past 10 years. Closely affected by the disease, this comedian and multidisciplinary artist who has a flourishing career in Canada and abroad, is engaged in helping bring awareness to the cause.

## STÉPHANE, HOW DID YOU GET INVOLVED WITH THE CANCER RESEARCH SOCIETY?

When I was approached by the Cancer Research Society, the fit was almost immediate. Right away, I felt like I had found my place. This cause is very dear to my heart and it was a chance for me to act in a significant way against this disease which turned my life upside down and divided my family when I was just a child.

Since then, any situation became an occasion to bring awareness to the disease. I volunteer for fundraising events and campaigns to promote the Society's work. I've also participated in several expeditions under the CRS Challenge program. In fact, I am currently preparing for my 4<sup>th</sup> CRS Challenge, which will take place in Portugal, to benefit research.



**"To outsmart cancer, we have to unite our forces. We need experts, equipment on the cutting edge of technology, laboratories, and people to help fund it all."**

## WHAT DO YOU HOPE TO ACCOMPLISH?

To outsmart cancer, we have to unite our forces. We need experts, equipment on the cutting edge of technology, laboratories, and people to help fund it all. That's why we all have a role to play. My objective is to encourage as many people as possible to rally around the cause. At this very moment, researchers funded by the Society are working on tomorrow's treatments and we must continue to support them.

Cancer cells are smart. They organize, they multiply, they relocate ... but when we unite our forces, we are smarter, as the advances of the past few years attest. For this reason, everyone must contribute and I'm playing my part.

## TELL US ABOUT YOUR EXPERIENCE WITH CANCER.

Cancer appeared early in my life. I was only 7 years old when my mother was diagnosed with colon cancer and 12 when she died of it. I have few memories of my mother because she was often hospitalized. Cancer had weakened her immune system, and so as not to contaminate her, we had to wear gloves, a mask, a bonnet... Later, I also lost my father, my sister, and my best friend to cancer.

We don't think about it, but when cancer enters the picture, the whole family is affected. There are so many questions, everyone is angry at life, at the disease. I really know what cancer can do and I look forward to the day when no one else will have to live through that.

## WHY THE CANCER RESEARCH SOCIETY?

The Society's 100% focus on research is what speaks to me. For almost 75 years now, the organization has not deviated from this objective and has contributed over 315 million dollars to the best research in the country. Thanks to research, survival rates have since gone from 25% to more than 60%. These aren't just numbers. These are lives, moments spent together and more memories to be made with our loved ones.

For me, research is reassuring, because up to now, it's research that has helped slow the disease down through better diagnoses, treatments, and methods of prevention. A few years ago, during an expedition with the CRS Challenge program, I walked with a participant whose son had died of cancer. Today, with the newest advances, that boy would have had access to better treatments and would have lived. This is the kind of hope that ties me to the mission of the Cancer Research Society. It's like offering the gift of life, a priceless gift, to the next generation.



# Donor Profile

When giving becomes a way to celebrate life



Patricia and Jean Bougie

Every year, we receive numerous testimonials from our donors who share with us their reasons for supporting our mission. Though every story is unique, they all have in common a deep connection to the disease. Patricia and Jean Bougie, longtime donors to the Society, have shared with us the reasons for their faithful commitment to supporting cancer research.

**"Giving has always been a part of our lives"**

The Bougies are committed donors who firmly believe that it is essential to share their good fortune. "We have no children, so we like to think of the world as our children. It's a way to continually remind ourselves to take care of others," they admit.

Their first donation was 25 years ago. They made it to support a close friend who had cancer. Every year since then, the Bougies allocate money to research. Patricia Bougie explains what originally inspired her:

"Many years ago, I read the autobiography of American President Harry Truman who said he set aside 10% of his income for charitable organizations. He wasn't a rich man, yet he firmly believed in the value of his involvement. It reminded me of the generosity of life and of other people towards us and inspired us to follow his example."

"While the focus of our involvement is the advancement of research, Canadian tax mechanisms make our contribution even easier and more advantageous. It's further incentive for us and all Canadians to give while we're alive. When we're lucky enough to have an income that lets us live well, it's more gratifying to give now, rather than wait until we're gone. We believe in this culture of sharing and have taken measures to ensure our contribution has more impact."

## OUR DONORS SHARE THEIR STORIES

Unfortunately, whether closely or from afar, we will all be affected by cancer at some point in our lives. That's why, to outsmart cancer, thousands of donors from coast to coast support the **100% research** mission of the Cancer Research Society. Behind each donor is a touching story of the impact cancer has had on their life. This year, we have decided to share some of them with you.



Visit

[outsmartcancer.ca](https://outsmartcancer.ca)

# Our Signature Events



## ACCORDS CÉLESTES: A NEW SIGNATURE EVENT

Hosted by actor and presenter André Robitaille, Accords Célestes' first edition was held in 2018, featuring pairings of food, music, and wine, at the magnificent Salon 1861. Organized in collaboration with Céleste Levure, the event welcomed more than 350 guests and raised \$65,000 for cancer research. Five renowned wine producers –Thomas Bachelder, Paolo de Marchi, Penny Murray, Patrick Piuze and Vincent Priou– presented great wines from Canada, France, and Italy. Star chef Antonin Mousseau-Rivard, of restaurants Le Mousso and Le Petit Mousso, created a five-course menu for the occasion. Each pairing was completed by an eclectic musical selection, from jazz, classical music, to rock 'n' roll. Charlotte Cardin, singer-songwriter, closed out the evening accompanied by Aliocha, to the great pleasure of the guests.



## READ FOR THE CURE: A PAN-CANADIAN SIGNATURE EVENT

In 2018, after 11 years of being run by volunteers from the community, the countrywide literary happening became a signature event of the Cancer Research Society. Born of the initiative of four passionate readers from Toronto, and thanks to the generous support of Penguin Random House of Canada Ltd., Read for the Cure allows bibliophiles to meet with renowned authors during fun filled literary evenings. Held in Toronto, Vancouver, Ottawa, and for the first time in Montreal, the event attracted nearly 1,500 participants and raised \$150,000 for cancer research. Since its inception 12 years ago, Read for the Cure has raised over 1.5 million dollars for research linked to the environmental causes of cancer.



### URBAN BBQ: A WATERFRONT MIDDAY GETAWAY

For its 6<sup>th</sup> edition, under the theme of “The Boardwalk,” the Urban BBQ beat an incredible record. Held for the first time at the Grand quai of the Old Port of Montreal, this not-to-be-missed business lunch gathered close to 1,200 guests and raised \$600,000 for cancer research. Presented by RBC Royal Bank of Canada, under the honorary chairmanship of Nadine Renaud-Tinker in partnership with Prestige partner ALRE, the event allowed guests to sample a delicious menu prepared by chef Marc-André Jetté, while networking with Montreal’s business community. The Urban BBQ’s ambassador, Ricardo and the Society’s spokesperson Stéphane Rousseau, were also present to welcome guests.



Nadine Renaud-Tinker



### CYCLO-GOLF CLASSIC: NEW IN SHERBROOKE

Almost 150 people travelled to the Elm Ridge Country Club for the 26<sup>th</sup> edition of the Cyclo-Golf Classic. For the first time, researchers from Sherbrooke University held a Cycling-Sherbrooke component to the Cyclo-Golf Classic. More than 40 cyclists assembled in Sherbrooke to pedal and join their fundraising efforts with those of the Montreal participants, bringing the amount raised to \$201,000.



### CRS CHALLENGE, A CHALLENGE TO SAVE LIVES

The CRS Challenge launched 7 expeditions this year under the theme of World Wonders. Seven new destinations were subject to challenges, each more stimulating than the last. The program allowed close to 60 people to contribute to the cause by surpassing themselves physically and raising almost \$700,000 for cancer research. This year, adventurer Lydianne St-Onge of “Lydianne, autour du monde” joined the “Conquering

the Great Wall of China” challenge. Accompanied by roughly ten other participants, she travelled more than 70 kilometres on what is recognized as the 7<sup>th</sup> wonder of the world and the largest ever still accessible man-made monument. The experience of a lifetime, to save lives!



# Community events

Every year, individuals, businesses, and foundations mobilize their communities around the cause. This commitment, manifested across the country, is a demonstration of the public's willingness to unite against this disease that ravages our families. In the past 10 years alone, various community initiatives have raised more than 3 million dollars for the Cancer Research Society.



## 20 YEARS FOR SKI FOR A CURE

This year marked the 20<sup>th</sup> anniversary of Ski for the Cure. Born from a family initiative in honour of Rob Lutterman, the event has raised almost 1.3 million dollars for research towards pancreatic cancer. The Rob Lutterman Memorial Fund is the first Society fund entirely dedicated to pancreatic cancer research, a particularly deadly cancer since it is often diagnosed too late. Thanks to this initiative, our best Canadian researchers have paved the way for improvements in detection and treatment of the disease.



## CN, A LOYAL PARTNER

CN and the CN Employees' and Pensioners' Community Fund have been valued partners of our organization since 1986. Thanks to their exemplary support and generosity, more than a million dollars have been raised for cancer research through their Jeans Day program and other fundraising efforts on behalf of the Society.



## BMO MASTERCARD

For more than 20 years, the Bank of Montreal has been a loyal partner of the Society through its BMO Cancer Research Society MasterCard. Cardholders can actively contribute to the cause since BMO gives the Society a percentage on all purchases made with the card. More than 2 million dollars have thus been raised for cancer research.

## OTHER COMMUNITY EVENTS

- À l'eau le 1<sup>er</sup> janvier - Une Vague d'Espoir
- Alexander Browne Triathlon
- Andrey Langlois High School Project « Danser pour l'espoir »
- Bingothon - Ghislaine Gallant
- C.A.S.A Saint-Eugène
- CFER en spectacle
- Cité Rive - Knitted Goods Sale
- Dépanneur Bossuet - Donation Can Initiative
- Domaine du rêve - Annual Walk
- Douglas Brian Shapiro Golf Tournament
- École Auclair
- Epic Sim
- Jacson Muniz - Cycling from Montreal to Boston
- Jean-Coutu Griffintown Cosmetics Evenings
- Jonathan Bolduc - raser la tête
- LaSalle Legion Dart Tournament (#212)
- Movember Dance of the Royal Canadian Legion (Sutton)
- Ominum de golf David Boutin
- Projet intégrateur - Lidia Lomba
- Quilles-O-Thon - Michel-Ann Garneau
- Rejéan Gélinau - Cycling from Vancouver to St-Jean-sur-le-Richelieu
- Scotiabank Charity Challenge
- St-Nicolas School Muffin Sale
- Step up for the Cure - Massey-Vanier High School
- The Saint-Lambert Games



## THANKS TO OUR VOLUNTEERS

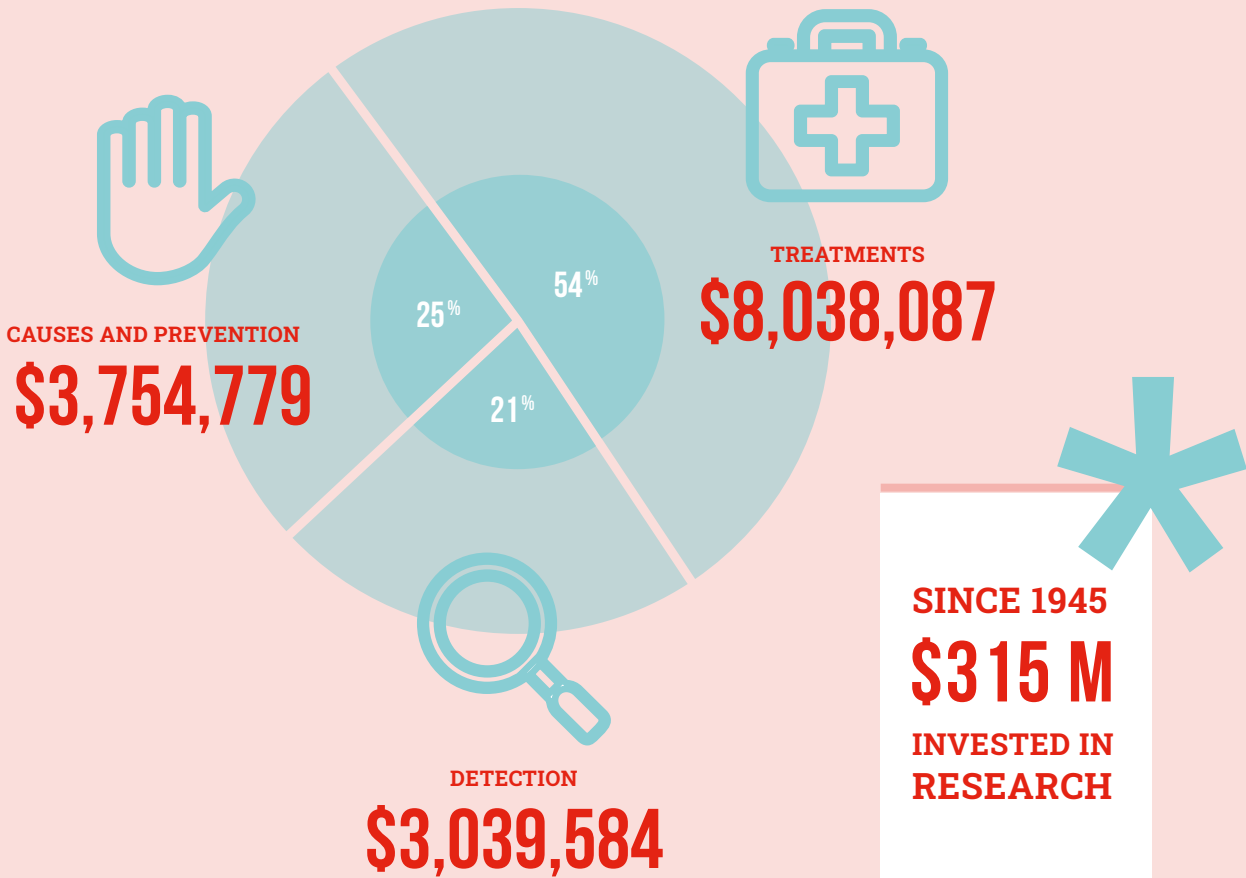
Every year, the activities of the Cancer Research Society are made possible by the contributions of hundreds of volunteers. From event greeters to volunteer researchers on our selection committees, these kindhearted people help us to build a future where we will have the means to outsmart cancer. To them we say: THANK YOU!



# Another Exceptional Year

INVESTMENTS IN  
2018-2019

\$15 M



The accomplishments of the past year are the result of a synergistic meeting of traditionally separate sectors: researchers, donors from all walks of life, and community members. 2018–2019 is a fine example of the essential role played by the Society in bringing together the various players in a powerful united front against cancer.

RESEARCH

407

FUNDING  
REQUESTS

69

SUSTAINED  
RESEARCH  
PROJECTS

70

NEWLY FUNDED  
RESEARCH  
PROJECTS

37

STRATEGIC  
PARTNERSHIPS



INVESTING FOR THE FUTURE

4

NEW SCHOLARSHIPS FOR  
THE NEXT GENERATION  
OF SCIENTISTS

7

SUSTAINED  
SCHOLARSHIPS



COMMUNITY INVOLVEMENT

500

VOLUNTEERS

3,000

PARTICIPANTS

160

PEOPLE ON  
RESEARCH TEAMS  
COAST TO COAST

260,000

DONORS FROM COAST  
TO COAST



# Financial report

2018-2019

The financial statements for the fiscal year ending August 31, 2019, show total revenues similar to those of the previous year, not taking into account unrealized investment income. The surplus revenue when compared to expenses also compares to that of the previous fiscal year.

## FINANCIAL OPERATIONS AS OF AUGUST 31

( AMOUNTS EXPRESSED IN THOUSANDS OF DOLLARS )

REVENUE	2019 Total \$	2018 Total \$
Annual campaigns	17 187	15 247
Major and planned gifts	3 626	3 779
Fundraising events and other	2 676	2 479
Partnerships - contributions to research	5 688	7190
Investment income, Realized	2 029	1 419
Investment income, Unrealized	(341)	1 072
	30 865	31 186
EXPENSES		
Annual campaigns	8 880	8 034
Major and planned gifts	165	170
Fundraising events and other	1 480	1 145
Administration	1 538	1 347
Amortization of property, equipment and software	61	85
	12 124	10 781
EXCESS AVAILABLE FOR RESEARCH	18 741	20 405
RESEARCH GRANTS AND FELLOWSHIPS (including related administrative expenses)	14 832	16 502
(DEFICIENCY) EXCESS OF REVENUE OVER EXPENSES	3 909	3 903

The Cancer Research Society is accredited by Imagine Canada with respect to their standardized programs recognizing excellence in governance



If we exclude revenue from Partnerships - research contributions, fundraising revenue surpass those of the previous fiscal year by 2 million dollars, or 9%.

If not for the fact that two partnerships ended during the previous fiscal year and another project, for which the disbursements scheduled for the current fiscal year were put off until the next, Partnership revenue – contribution

to research as well as research grants and subsidies would have shown an increase of 25% and 15% respectively.

As for the statement of financial position, it shows a robust financial health which gives the means for the Cancer Research Society to achieve its strategic goals.

The future is promising!

## FINANCIAL POSITION AS OF AUGUST 31

( AMOUNTS EXPRESSED IN THOUSANDS OF DOLLARS )

ASSETS - CURRENT ASSETS	2019 Total \$	2018 Total \$
Cash	2 931	3 131
Accounts receivable	259	177
Prepaid expenses	166	185
Other assets	91	75
	3 447	3 568
Investments	35 574	31 817
Property, equipment and software	360	307
	39 381	35 692
LIABILITIES - CURRENT LIABILITIES		
Accounts payable and accrued liabilities	305	369
Deferred contributions	539	678
	844	1 047
Lease inducement	140	157
	984	1 204
FUND BALANCES		
Restricted funds	9 259	10 165
General funds	29 138	24 323
	38 397	34 488
	39 381	35 692

# Our Collaborators

Every year, the Society works in collaboration with other institutions who share the objective of stopping cancer in its tracks. These collaborations help us optimize the funding of research, the quality of research projects, and the development of emerging research opportunities.

LIST OF OUR COLLABORATORS

- Aligo Innovation
  - Beatrice Hunter Cancer Research Institute
  - Bergeron-Jetté Foundation
  - BioCanRx
  - Bladder Cancer Canada
  - Breast Cancer Society of Canada
  - C17 Council
  - Canadian VHL Alliance
  - Cancer Research Society Division of Epidemiology at McGill University
  - Chaire de recherche Environnement – Cancer Guzzo in partnership with the Université de Montréal
  - CHEO
  - CQDM
  - CURE Foundation
- Elekta
  - Exactis Innovation
  - R. Howard Webster Foundation
  - Fonds de recherche du Québec - Santé (FRQS)
  - Génome Québec
  - Imagia
  - Imaging, Research and Technology (IR&T)
  - Immune Biosolutions
  - Institute of Cancer Research (ICR) of the Canadian Institutes for Health Research
  - IRICoR
  - Katana Biopharma
  - MEDTEQ
  - Merck Canada
  - Ministère de l'Économie et
- de l'Innovation du Québec
  - Mitacs
  - Myeloma Canada
  - Novalgo
  - Oncopole
  - Ottawa Hospital Research Institute (OHRI)
  - Ovarian Cancer Canada
  - Pancreatic Cancer Canada Foundation
  - PROCURE
  - Prompt
  - Quebec Breast Cancer Foundation
  - The Ottawa Hospital Foundation
  - TransferTech Sherbrooke
  - TransMedTech Institute
  - University of Ottawa

# Our Corporate Donors and Foundations

\$100,000 AND MORE

- BMO Bank of Montreal / BMO Insurance / BMO Cancer Research Society Mastercard
- Imagia
- Innovairre
- MEDTEQ
- RBC Royal Bank

\$25,000 TO \$99,999

- CN Employees and Pensioners' Community Fund
- Kidney Cancer Canada
- McKesson Canada
- Rio Tinto
- Saputo
- Scotiabank

\$10,000 TO \$24,999

- Alre Properties
- BCF Business Law
- Caisse de dépôt et placement du Québec
- Deschênes Group
- Dosylen Investments
- Estate of Joseph Ross Elmes
- Fasken
- Lassonde
- Les Aliments Unifood
- Location Gervais
- Location Prime Leasing
- Markham Waterloo Mennonite Conference
- Muraflex
- Power Corporation of Canada
- Raymond Chabot Grant Thornton
- Richter
- SNC-Lavalin
- Strategic Charitable Giving Foundation
- Sun Life Financial

\$5,000 TO \$9,999

- Borden Ladner Gervais
- Canderel
- Cedarome Canada
- Choisy Laboratories
- Cogir Real Estate, G.P.
- Crowe BGK
- Davies Ward Phillips & Vineberg
- Desjardins Financial Security
- Duchesnay
- Dunton Rainville Barristers
- Énergir
- EPMG
- Explorance
- Fondation Québec Philanthrope
- Foodtastic
- Gestion Melias
- Gift Funds Canada
- Gowling WLG
- Grenier Gagnon Law Office
- Group Germain Hotels
- Habitation Solano II
- Holand Automotive Group
- Ivanhoé-Cambridge
- JB Construction Canada
- Jewish Community Foundation of Montreal
- Les Investissements Benoît Lemieux
- Levy Salis
- Louis-André Chartrand M.D.
- McCarthy Tétrault
- Miller Thomson Lawyers
- Mirella & Lino Saputo Foundation
- P&R Desjardins
- Paper Label
- Pâtisserie Michaud
- Pomerleau
- PwC Canada
- RBC Capital Markets

- RBC Dominion Securities
- Robic
- Rodeo FX
- Spiegel Sohmer
- StyroChem Canada
- TD Bank
- TD Commercial Banking
- The Charles Norcliffe Baker & Thelma Scott Baker Foundation
- The Tenaquip Foundation
- Traders
- Wellington Laboratories

\$1,000 TO \$4,999

- ABC Gestion Parasitaire
- ABMS Chartered Appraisers
- Abundance Canada
- Addenda Capital
- Alepin Gauthier
- Alexandra Dubé MD
- All Charities Campaign
- Altus Group
- American Society of Plumbing Engineers
- Aqueduct Foundation
- Association sportive les Selects Inc.
- Atelier Chaloub Architectes
- Avila Investments
- Axis Lighting
- BCF Business Law
- Beauchemin International
- Beaulieu Vision Care
- Bell Canada
- Bionest
- Blain Joyal Charbonneau Chartererd Accountants
- Bord'Elle Boutique Bar & Eatery
- Bravi
- Bryan Ventures
- Business Development Bank of Canada
- C. Isabelle et Fils



- Calgary Foundation
  - Canadel
  - Carreaux Metro
  - Céline & Jacques Lamarre Foundation
  - Cercle Filles d'Isabelle # 715
  - Chatime
  - Chiasson Gauvreau
  - Chicago Title Canada
  - Choisy Laboratories
  - Clif Properties
  - Clockaudio North America
  - Club de l'âge d'or Ste-Germaine
  - Cogir Real Estate, G.P.
  - Comité d'Action Sociale et Artisanale (CASA) St-Eugène
  - Commission scolaire des Samares
  - Community Foundation of Ottawa
  - Construction CPB
  - Construction RRDL
  - Constructions Eugène Rodrigue
  - Corwik
  - Crofton Moore
  - CTI Life Sciences
  - Dayus Register & Grille
  - Delfrutti
  - Delmanor
  - Delmar
  - Demers Beaulne
  - Dentons
  - Desjardins Financial Security
  - Devamc Canada
  - Développements Nelligan
  - Dimension F M
  - Dorssers
  - Drazin Friedman Notaries
  - Ducharme Seating
  - EBL Électricité
  - Empreinte North America
  - Englobe
  - Équipements FMS
  - Ernst & Young
  - Exportation et développement Canada
  - F. Ménard
  - FDS Group
  - Fidelity Investments Canada
  - Fiera Private Debt
  - Fiera Real Estate
  - Focus Microwaves
  - Fondation Carrousel
  - Fondation Faire Ensemble
  - Fonds immobilier de solidarité FTQ
  - Foundation of Greater Montreal
  - Franesse
  - Front Street Capital Charitable Foundation
  - Gardium Security
  - Gascon & Associates
  - Gauthier Roy Huot Évaluateurs Agréés
  - Gensteel Doors
  - Gerjotin
  - Gestion André Waechter
  - Gestion R.G. Dube
  - Gift Funds Canada
  - GLT +
  - Griva-Pete Holdings
  - Groupe Chevalier Séguin
  - Groupe Daoust / Forget
  - Groupe Mozarco
  - Henry Shein Canada
  - Highlight Motor Group
- Hotel Carmacks
  - Hôtel Espresso Montreal Centre-Ville
  - iA Financial Group
  - IBM Canada Employee's Charitable Fund
  - iMarketing Solutions Group
  - Indumo Hydrauliques
  - Intact Foundation
  - Invera
  - IPSO FACTO investissement immobilier
  - Jerry MacLean & Son Automotive
  - John F. Quinney Family Foundation
  - Johnson Controls
  - Jolicoeur Savard Assurance
  - Ken Shaw Lexus
  - La Chapelle
  - La mission des Servantes de Notre-Dame, Reine du Clergé
  - Lambert Somec
  - Lancôt
  - Lapointe Rosenstein Marchand Melançon Attorneys
  - Lavery Lawyers
  - LCO Construction and Management Consultants
  - Le Vieux Four Manago
  - L'Équipe Spectra
  - Les Constructions Reliance du Canada
  - Les Équipements d'érablière CDL
  - Les Fines Herbes
  - Les Roses de l'Amitié
  - Les Services Financiers Alain Vallières
  - Levy Pilotte
  - Lilo
  - Linea P International
  - Link Charity Canada
  - LM Enterprises
  - Lu-Ard Électrique
  - Mackenzie Investments
  - Marjorie Way & Marilyn Bryan-Pulham
  - Mark Motors of Ottawa
  - Marmen
  - MC Finance Group
  - McKesson Canada
  - Media Cash Register
  - Media Groupe
  - Metalium
  - Michael Bros. Excavating
  - Michel Beaubien & Associates
  - Missionary Oblate Sisters of Saint Boniface
  - Mitchel Lincoln Packaging
  - Modextil
  - Mohammed Kanwal Family Foundation
  - Monastère St-Augustin
  - Montreal Clinical Research Institute (IRCM)
  - Montreal Neon Signs
  - Montship
  - Moose Knuckles
  - MPIQC
  - MSC Canada
  - MVC Solutions
  - Nadia Bonetti Associés
  - Nationwide Appraisals Services
  - NÉOMED-LABS
  - Norton Rose Fulbright Canada
  - Novotel
  - OEC Montreal
  - Olymel
  - Otéra Capital
  - PC Dupuis
- PharmaCos Machiney
  - Placeval
  - PLANIT Construction
  - PPU
  - Préparation Surprep
  - Presse Café
  - Prévost notaires
  - Primewood Lumber
  - Prisma Construction
  - Private Giving Foundation
  - Proaction International
  - PSB Boisjoli
  - Quadra Plast
  - Québec International
  - Raymond Chabot Grant Thornton
  - RBC Dominion Securities
  - Réal Côté
  - Redbourne Group
  - Régulvar
  - Rosetown Farming
  - Royal Canadian Legion
  - Rustique
  - S.T. Maçonnerie
  - Second Cup
  - Services Financiers Perma
  - SFL Wealth Management
  - Shalwin
  - Société de développement Angus
  - Société en Commandite D.D.O.
  - Soeurs de Sainte-Marcelline
  - Soeurs Missionnaires de Notre-Dame des Anges
  - Solutions Zoom
  - Sony Music Canada
  - St-Hubert Foundation
  - Synergy Formwork
  - Table 51
  - Techno-Tec
  - Telesystem
  - TELUS
  - Terrex Real Estate Service
  - Textron Matching Gifts
  - The GSI Group Cold Storage
  - The Ken and Roma Lett Foundation
  - The Personal
  - The Richter Charitable Foundation
  - The Royal Trust Company
  - The Sahara Foundation
  - Toronto Foundation
  - Transfab TMS
  - Trudeau
  - Trudel Immeubles
  - UHY Victor
  - UNIGLOBE Voyages Lexus
  - Uniprix
  - United Way east Ontario
  - United Way of Greater Toronto
  - Usinage BGL
  - Viau Food Products
  - Victoria Foundation
  - Voxco
  - White Cross
  - Wyalta Resources
  - Yacout Investments
  - Yves David Opticiens

# Our Individual Donors

In 2018–2019, more than 260,000 Canadians gave to the Cancer Research Society, of which tens of thousands were new donors. The Society was also able to rely upon the loyalty donors who renewed their support, showing their commitment to cancer research. A very big thank you to all!

# Our Research Funds

- Andy & Léna Chabot Research Fund
- Ann Matyas Memorial Fund
- Benoit Gagnon Research Fund
- Charlotte Légaré Memorial Fund
- Daniel Primeau Research Fund
- Douglas Brian Shapiro Fund
- Fonds environnement-cancerTM - Read for the Cure
- Give for a Cure Fund
- Herbert James Davies Research Fund
- Katherine Campbell MacDonald Memorial Fund
- Kathryn Jeanne Randle Memorial Fund
- Rina Primeau Memorial Fund
- Rob Luttermann Memorial Fund
- Steven E. et Scott I. Drabin Research Fund
- Vicki Woloschuk Memorial Fund

# Bequests

Every year, some people choose to ensure that their support of cancer research continues after their lifetime by making a bequest in their will. In 2018-2019, the Society received more than 3 million dollars in this way. We would like to pay tribute to these generous and hopeful people who, during their lifetime, invested to offer future generations a world in which we are outsmarting cancer.

- Bernice Marion Anderson
- Ella Elsie Anderson
- Jean-Paul Archambault
- Edwin J. Batiuk
- Claire Ann Bissonnette
- Germaine Bossé
- Douglas Leslie Branton
- Robert James Brim
- Katherine Campbell MacDonald
- Elaine Cantley
- Madeleine Champagne
- Irène Cléroux
- John Joseph Comeau
- John Daykin Green
- Herbert James Davies
- Pauline Desbiens
- Gaétan Deschamps
- Gertrude Desjardins
- Lloyd Douglas Wilcox
- Karel Frans Joseph Groniger
- Florence Hall
- Ian Hopes Morris
- Gertrude Vincent Hotte
- Ninette Frances Hughes
- Herbert Austin Judge
- Henry Joseph Knysh
- Georgette Laforest
- Lucille Lavigne
- Alice Elizabeth LeWare
- Jean Lymburner
- Pauline Martineau
- Norma Jean McLean
- Blanche McIver
- Marie Meunier Miller
- Joan Marie Mitchell
- Geneviève Rompré Mockler
- Joyce Muriel Nichols
- Gérard Adélard Péloquin
- Jean-Paul Provencher
- Marjorie Provencher Tessier
- Olga Roehrberg
- Johannes Antonius Romyn
- Gloria A. Ryan
- Marie-Anne Spino Saber
- Cecile Marie Louise Sargent
- John Allan Saunders
- Linda Rose Star
- Eric Tipping
- Edward Wong Aie
- Dorothy Denise Wood



## BOARD OF DIRECTORS



**MARTIN THIBODEAU**  
Chairman of the board



**PHILIPPE P. HUNEAULT**  
Vice-president



**HEIDI LANGE**  
Secretary



**KATIA MARQUIER**  
Treasurer

## ADMINISTRATORS



**SERGES BÉRIAULT**



**RENÉ DOUVILLE**



**BENOÎT DUROCHER**



**MIKE G. BOUCHARD**



**ANNIE LEMIEUX**



**MONIQUE MERCIER**



**FRANÇOIS PAINCHAUD**



**DOROTHY QUANN**



**JOANNA WILSON**



**GEORGE ZOGOPOULOS**





#### **CANCER RESEARCH SOCIETY**

Phone: 514 861-9227

Toll-Free: 1 888 766-2262

CancerResearchSociety.ca  
info@src-crs.ca

625, President-Kennedy Avenue, Suite 402  
Montréal Québec H3A 3S5

---

**FOLLOW US:**     

---

ISSN 1920-8995 - Legal deposit – Bibliothèque nationale du Québec, 2019