

2017 — 2018

ANNUAL REPORT



10 EXPEDITIONS WITH THE CRS CHALLENGE

MONIQUE TELLS HER STORY | p. 14

p. 12

STATE OF RESEARCH:
DISCOVERIES THAT RAISE HOPE

p. 17

CANCER RESEARCH MADE STRONGER,
THANKS TO A COMMITTED COMMUNITY

A WORD FROM OUR PRESIDENT AND CHIEF EXECUTIVE OFFICER



WHAT AN EXCEPTIONAL YEAR!

Throughout the past year, we significantly increased our cancer research funding across Canada. In particular, we have developed partnerships with strong potential for impact, created a promising new competition unique to the country, and won the trust of tens of thousands of Canadians who joined our faithful donors in our efforts to beat cancer. It is therefore with immense pride and renewed hope that I present this annual report of the Society.

PRIDE, because yet again, our devoted team has surpassed itself. And on that note, I wish to offer my most sincere gratitude to them and to the hundreds of volunteers who work behind the scenes to help us attain our objectives.

HOPE, because now more than ever, beating cancer is within our grasp! This is why the Society has taken on the mandate of doubling its investment in research by 2022. Our scientists are at the forefront of oncology research in the world. With the support of the Society, the best Canadian researchers can unite, work together and explore every avenue so that in the near future, cancer will no longer kill our loved ones.

We have every reason to be optimistic as long as we present a common front against this disease. For as you already know, the fight to beat cancer is a long-standing battle and it is by standing united and armed with perseverance that we will win.

MAX FEHLMANN
PRESIDENT AND CHIEF EXECUTIVE OFFICER

A WORD FROM THE CHAIRMAN OF THE BOARD OF DIRECTORS



EVEN MORE DYNAMIC THAN EVER, THANKS TO YOUR SUPPORT!

Two years ago, the Cancer Research Society set itself an ambitious goal to double its investment in research by 2022 in order to increase its impact on the prevention, detection and treatment of all types of cancer.

In order to do so, we banked on the support of Canadians and partners who, since the beginning, contributed and believed in the importance of our organization's mission: devoting ourselves exclusively to financing leading-edge scientific research on cancer. We were right to!

The incredible results coming from these efforts in 2017-2018 showed us how much Canadians trust our

Society when it comes to undertaking this important work. This dedication by the public most notably manifested itself through multiple donations as well as the massive engagement by individuals, companies and foundations devoted to our different initiatives.

Now more than 70 years old, the Cancer Research Society is even more dynamic than ever, continually renewed, devoted and passionate. I would like to express my deepest gratitude to all those who make our organization's work possible.

Your continued support bears witness to your engagement to all future generations. With you and your help, success is certain!

MARTIN THIBODEAU
CHAIRMAN OF THE BOARD OF DIRECTORS

A SERIOUS
AND ONGOING
THREAT

Research has given us extraordinary advances in the fight against cancer. Every year, more and more people afflicted by the disease survive it. However, the fight is far from over. This year's Canadian Cancer Statistics illustrate what's left to do in order to prevent, treat and beat this terrible disease that touches one out of every two people. Even with the decrease in the overall rate of mortality thanks to new treatments being discovered, it is still very high for certain types of cancer.

IN 2017

206,200
80,800

NEW CANCER
DIAGNOSES

ESTIMATED CANCER
RELATED DEATHS

EXPLANATORY FACTORS:
AGING AND GROWTH OF
THE POPULATION



The risk of cancer increases with age, particularly in Canadians 50 years of age and older.

Nearly 90% of new cancer cases and 96% of cancer deaths occur among those aged 50 and over.

THE HIGHEST
PROPORTION OF
CANCER DEATHS WILL
OCCUR IN CANADIANS
80 YEARS AND OLDER
(34.1%).

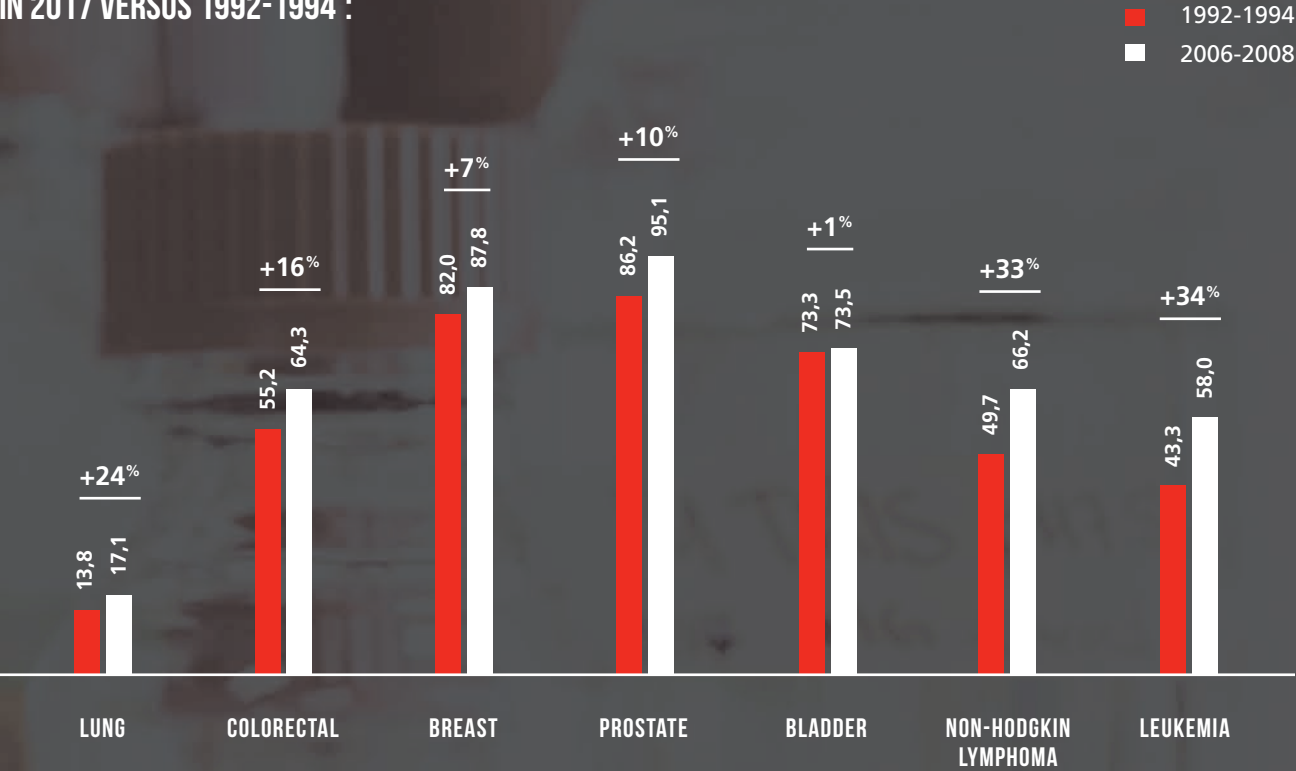
HIGHER
SURVIVAL
RATES

Between 1992–1994 and 2006–2008, survival rates increased from 53% to 60% for all cancers combined.

SURVIVAL RATE
AFTER 5 YEARS



FIVE-YEAR SURVIVAL RATES
FOR LEADING CANCER TYPES
IN 2017 VERSUS 1992-1994*



* Age-standardized five-year relative survival ratios (%) for leading cancer types

Sources: Étude d'impact socioéconomique de la recherche en oncologie au Québec. KPMG, Oncopole and Montréal InVivo

THE SOLUTION LIES IN RESEARCH

OUR ONLY HOPE FOR BEATING THE DISEASE LIES WITH THE THOUSANDS OF RESEARCHERS ACROSS THE COUNTRY.

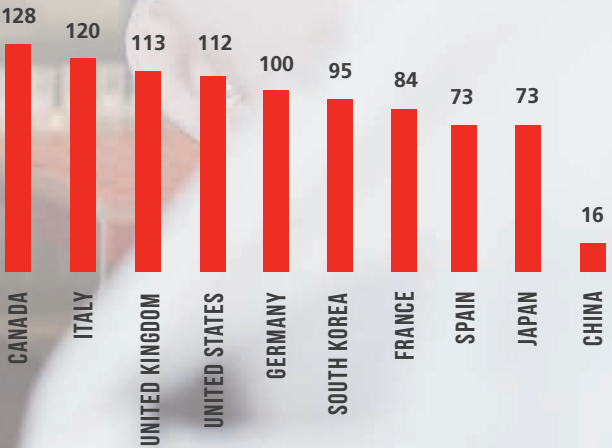
Thanks to research, we are constantly gaining ground on cancer. More than ever before, the emergence of new technologies and research methods give us renewed hope for understanding the disease, for accelerating the identification of treatments and for preventing its onset. In order to keep the momentum, it is imperative that we continue mobilizing resources and actors from our society.



BATTLING ON SEVERAL FRONTS

Cancer is a complex condition, which is comprised of more than 200 diseases, each with its own characteristics. Therefore, in order to reduce the hold cancer has on our lives, our researchers must study its different facets and manifestations, from prevention to treatments.

NUMBER OF SCIENTIFIC PUBLICATIONS PER CAPITA, PER COUNTRY



CANADA, CHAMPION IN ONCOLOGY RESEARCH

Canada ranks first among the 10 most prolific countries in terms of scientific publications in oncology (per capita). The scientific impact of Canadian publications is also among the best at the international level. By supporting Canadian researchers, the Cancer Research Society invests in leading-edge research with high potential for impact.

* Total from 2006 to 2017, per 1,000 inhabitants
Sources: Science Metrix Analyse: KPMG
Étude d'impact socioéconomique de la recherche en oncologie au Québec. Oncopole and Montréal InVivo

RESEARCHERS WHO ARE WORKING RELENTLESSLY TO OUTSMART CANCER

Donations to the Cancer Research Society help support the best researchers in the country who, through their discoveries, improve the prevention, detection and treatment of cancer. Each year, the Society brings together its panels of experts for a rigorous peer evaluation process in order to identify and fund the researchers whose projects are the most promising.



RESEARCHER
S I N C E
1998

NICOLE BEAUCHEMIN

MCGILL UNIVERSITY

Colorectal cancer is often found in members of a same family, suggesting a strong hereditary component. This is the reason why Nicole Beauchemin and her team are looking for a genetic signature of the disease. This very promising research will help identify individuals presenting genetic predispositions to the disease before it develops and keep them one step ahead of cancer.

REBECCA AUER

OTTAWA UNIVERSITY

Surgery is an effective way to eliminate cancerous tumours, but it unfortunately weakens the immune system at the same time, a phenomenon that sometimes allows remaining cancer cells to relocate into other organs. In 2018, Rebecca Auer's team discovered a new unconventional therapy based on existing drugs, which helps prevent post-surgical metastasis. Combining a flu vaccine with an erectile dysfunction medicine makes it possible to counteract the weakening of the immune system. This new therapy would help the immune system eradicate the remaining cancer cells, which greatly reduces the risk of relapse.

RESEARCHER
S I N C E
2007



©mivphotography2013



RESEARCHER
S I N C E
2013

FRANCO VIZEACOUMAR

UNIVERSITY OF SASKATCHEWAN

Franco Vizeacoumar's team is working on a strategy to treat patients with advanced pancreatic cancer. Their research has revealed new therapeutic gene targets leading to pancreatic cancer cell death when they are inhibited simultaneously. These very promising results are bringing hope to those affected by this cancer, which remains among the most difficult to detect, and leaves little chance for survival.



JIM PETRIK

UNIVERSITY OF GUELPH

Jim Petrik's team published a study showing a winning therapy combination for a cancer known to be difficult to treat: ovarian cancer. After they optimized access to the tumour site by improving its vascular system, the team applied an oncolytic virus, which simultaneously attacks malignant cells and strengthens the immune system. Combined with traditional chemotherapy, this therapy showed spectacular results, reducing advanced tumour progression and stopping metastasis toward other organs.

KIRK McMANUS

CANCERCARE MANITOBA

Because it is often detected at an advanced stage, colorectal cancer kills nearly 10,000 Canadians every year. Kirk McManus and his team have identified a new treatment target for this deadly cancer. Indeed, the inhibition of the SOD1 protein could help defeat colorectal cancer for a subgroup of patients. This protein could also be used as a target to treat other types of cancer presenting similar molecular characteristics. Kirck McManus' team wants to decipher all aspects of the disease, in order to come up with new therapeutic strategies to target and kill cancer cells.



SUPPORTING SCIENTIFIC TALENT TO ENSURE THE FUTURE OF RESEARCH

Our Scholarships for the Next Generation of Scientists program is an initiative to ensure the continuation of cutting-edge research, by investing in new generations of talented young scientists. Unique in Canada, the program helps postdoctoral fellows transition to investigator positions in Canadian universities or research centers.

IMPROVING QUALITY OF LIFE

WEI ZHANG

Wei Zhang's research aims to develop targeted therapies that have fewer side effects on patients than traditional chemotherapy treatments, for all types of cancer. The scholarship he received was made possible thanks to BMO Bank of Montreal. To mark its 200th anniversary, BMO partnered with the Society to support cancer research. Wei Zhang was recently accepted as a researcher at the University of Guelph.



STIMULATE THE IMMUNE SYSTEM

SARAH CROME

Recently recruited as an investigator at Toronto General Hospital Research Institute, Sarah Crome works to develop new therapies that empower the patient's immune system to effectively defend itself against cancer cells. Her work could help improve therapies for all types of metastatic cancers.



COUNTERACTING METASTASIS

ANDREW LEIDAL

Currently wrapping up his Postdoctoral fellowship at the University of California, Andrew Leidal plans to return to Canada to pursue his research career and to study new approaches to counteract the formation of metastases. This knowledge could be applied in cases of melanoma and all types of metastatic cancers.



CUTTING-EDGE TECHNOLOGY AGAINST CANCER

SORANA A. MORRISSY

Newly recruited as an investigator at the University of Calgary, Sorana A. Morrissy uses bioinformatics to better understand pediatric brain cancer. By studying the tumour's characteristics, she hopes to uncover vulnerabilities that will help find ways to destroy it.



PARTNERSHIPS THAT GIVE NEW HOPE



ARTIFICIAL INTELLIGENCE TO IMPROVE TREATMENTS

This partnership aims at developing an innovative radiotherapy approach, based on artificial intelligence, to better target treatments for cancerous tumours of the liver, thereby protecting the surrounding organs.

IN PARTNERSHIP WITH:
Polytechnique Montréal, ÉTS, CRCHUM, MEDTEQ, Elekta and TransMedtech Institute



THERAPEUTIC VACCINATION

This partnership supports the development of personalized vaccines for acute leukemia. This vaccine acts on two fronts: on one hand, it attacks cancer cells, and on the other hand, it stimulates the immune system.

IN PARTNERSHIP WITH:
BioCanRx and The Ottawa Hospital Research Institute



AN ULTRA-POWERFUL SCANNER TO OPTIMIZE BRAIN CANCER DETECTION

With the help of many partners, this project supports the development of a highly advanced scanner to allow early detection of brain tumours, a determining factor for better prognosis.

IN PARTNERSHIP WITH:
Université de Sherbrooke, MEDTEQ, MITACS, IR&T, PROMPT and Novalgo



JOINING FORCES AGAINST CANCER

With a 1.5 million dollars contribution, the Cancer Research Society joined forces with Oncopole and its partners, and together invested a total of 12 million dollars to support innovative and multidisciplinary projects in oncology. The goal is to unite the expertise and strengths to be found in the province of Quebec in the field of oncology to have a greater impact on the disease. Over sixty top researchers from twelve research institutions will develop seven highly promising research projects to study lesser-known aspects of cancer.

IN PARTNERSHIP WITH:
Oncopole, FRQS, Merck Canada, Génome Québec, IRICoR and CQDM

“

TWO OF OUR YOUNG RECRUITS HAVE RECENTLY BENEFITED FROM THE SCHOLARSHIP FOR THE NEXT GENERATION OF SCIENTISTS PROGRAM(...). WE DO NOT KNOW OF ANY OTHER PROGRAM THAT CAN COMPARE TO THIS ONE. WE THANK THE CANCER RESEARCH SOCIETY FOR ITS VISION AND FOR ITS EXCEPTIONAL SUPPORT.

”

NATHALIE RIVARD, VICE-DEAN
UNIVERSITÉ DE SHERBROOKE

“

AS ONE OF THE MOST WELL RESPECTED CANCER RESEARCH FUNDING AGENCIES IN THE COUNTRY, RECEIVING A CANCER RESEARCH SOCIETY GRANT MEANS NOT JUST CRUCIAL DOLLARS TO CONDUCT STUDIES BUT IS A VALIDATION THAT THE CANADIAN COMMUNITY OF SCIENTISTS, PHYSICIANS, PATIENTS AND DONORS BELIEVE IN WHAT YOU ARE TRYING TO ACHIEVE. THANK YOU FOR YOUR SUPPORT!

”

DR. REBECCA AUER
UNIVERSITY OF OTTAWA

10 EXPEDITIONS

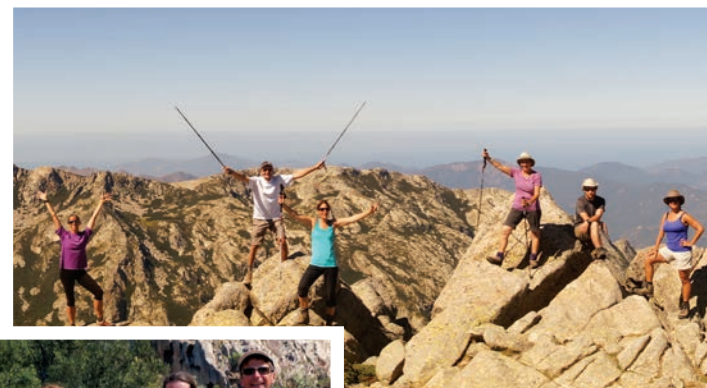
WITH THE CRS CHALLENGE

MONIQUE TELLS HER STORY

With ten successful challenges to her credit and more than \$100,000 raised for cancer research, Monique Leblanc is a star participant of the CRS Challenge program. Tireless, the woman whose expedition companions have nicknamed *Monique the Machine*, registered in 2018 for her 11th challenge, planned for spring 2019.



“THEY SAY IT’S THE ADVENTURE OF A LIFETIME, AND IT’S TRUE!”



FACING CHALLENGES TO SAY NO TO CANCER

Monique was 59 when she signed up to her first CRS Challenge. Philanthropic by nature, she was already known to those around her for her participation in numerous fundraising activities for the benefit of various causes. She was therefore not surprised when one day her husband gave her a leaflet on the CRS

“WHEN I RETURNED FROM MACHU PICCHU, I DREAMED ABOUT IT EVERY NIGHT FOR AT LEAST TWO WEEKS IN A ROW! THAT’S WHEN I KNEW I WOULD DO OTHER CHALLENGES.”

Challenge, a program of charitable expeditions run by the Cancer Research Society. Feeling drawn to the Machu Picchu challenge, she registered without really knowing just how much room the CRS Challenge would take up in her life.

MONIQUE, WHY CHOOSE TO SUPPORT THE FIGHT AGAINST CANCER?

I was 4 years old when I had my first experience with cancer. My 3-year-old cousin had leukemia and I remember having gone to see her with my mother. I remember being deeply shaken. Later, when I became a nurse, I worked a lot in home care and I saw how much suffering cancer could cause. Now that I am retired, helping the fundraising efforts for cancer research is my way of doing my part.

YOU ARE PREPARING FOR YOUR 11TH EXPEDITION WITH THE CRS CHALLENGE. WHAT MOTIVATES YOU TO CONTINUE?

My primary source of motivation is the satisfaction of surpassing myself and the incredible feeling of accomplishment I get after every challenge. I truly get the impression that I am making a difference.

Plus, everyone encourages me enormously. Many have said that it’s inspiring to see me do this at my age.

TELL US ABOUT YOUR CHALLENGE COMPANIONS

There are participants from everywhere and of every age. There are challenges with differing levels of difficulty and so each person can find something that suits them. Anybody can do it, as long as they train for it. I succeeded at every challenge because I always took my preparation seriously.

Each time, I meet participants from previous challenges as well as new people. Strong relationships are formed because, regardless of our differences, we are all united around the same cause, one which touches each of us personally: cancer. Therefore, succeeding becomes a collective challenge. Once we are at the end, we are all moved to have done it together. It is very gratifying and wonderful friendships are formed.

AND YOU LIVED SOME UNFORGETTABLE MOMENTS!

I remember in particular the time I did the Kilimanjaro challenge. There were sixty porters and guides and they sang every morning to encourage us. The joy and energy they emanated gave us a boost of motivation to get going. That, along with the magnificent setting, was absolutely magical! Every one of my challenges has had a great impact.

“They say it’s the Adventure of a Lifetime, and it’s true!”

STANDING UNITED AGAINST CANCER

A WAVE OF SOLIDARITY FROM COAST TO COAST

The work of the Cancer Research Society is possible thanks to great community involvement in all of its forms: individuals, companies, institutions and foundations. This commitment shines through multiple volunteer initiatives and remarkable attendance at the Society’s events. This is a token of the trust the Society has built with the public over the years.

The Cancer Research Society has become a gathering space for all those who wish to unite in order to make a significant difference in the fight against cancer. We pay tribute to all of them.

COMMUNITY EVENTS

- | | |
|--|--|
| • Omnium de golf David Boutin | • À l’eau le 1er janvier - Une Vague d’Espoir - Gilbert Richard |
| • Douglas Brian Shapiro Golf Tournament | • Rob Lutterman - Skions pour la vie |
| • 5 th Annual Vicki Woloschuk Memorial “Nine and Wine” | • Dépanneur Bossuet and CORE Business Center - Donation Can Initiative |
| • Calendrier des pompières 2017 | • Hélène Lapierre - Album Launch |
| • Les courses du dimanche - Lili Bertrand-Vermette | • Cité Rive - Knitted Goods Sale |
| • Partie de cartes – C.A.S.A Saint-Eugène | • LaSalle Legion Annual Cancer Dart Tournament (#212) |
| • Movember Dance of the Royal Canadian Legion (#158) | • Bingothon - Club de l’âge d’or Ste-Germaine-Cousin |
| • Souper-bénéfice - Justin Richard | • Scotiabank Charity Challenge |
| • AXXEL Christmas Party | • Événement 100% féminin - Mélanie Little |
| • Comité de la fête du Canada de Buckingham - Susan McNamara-Lemieux | • Step up for a Cure - Massey-Vanier High School |
| • Pace the Beat - May Wells | • The Saint-Lambert Games - Dr. Volker Blank |
| • Amerigo Esposito - Grocery Store Fundraiser | • La Foulée Mauricienne - Nancy Boisvert |
| • Forbidden Plateau Obedience and Tracking Club | • Alexandre Côté - Barman for a Night and Karaoke |
| • VR ÉMOND PLUS - RV Part Sale | • Coralie Bienvenue - Half-Marathon |
| • Les Fantaisies de Lili - Jewellery Sale | • Domaine du rêve - Annual Walk |

COMMUNITY INITIATIVES

Every year, people across the country come together to contribute to the fight against cancer.



READ FOR THE CURE

\$160,000 FOR ENVIRONMENT CANCER RESEARCH

Born from the initiative of four Toronto women, all members of the same book club, Read for the Cure has become a not-to-be missed literary event held across Canada. Thanks to a partnership with Penguin Random House Canada Ltd., Read for the Cure allows book lovers to unite for the cause during literary evenings where successful authors come to discuss their work. Presented in Toronto, Vancouver and Ottawa in 2017, the event welcomed close to 1,500 participants and raised \$160,000 for cancer research.

Since its inception 11 years ago, Read for the Cure has raised more than 1.35 million dollars for research relating to the environmental causes of cancer.



THE BUSINESS COMMUNITY IN ACTION

\$2 MILLION, 20 YEARS, THOUSANDS OF CARDHOLDERS

The business community has an important role to play in the fight against cancer, a role the **Bank of Montreal (BMO)** understands very well. For the past 20 years, it has been a faithful partner of the Cancer Research Society with the BMO Mastercard Affinity Card. Through this partnership, BMO gives cardholders a way to contribute actively to the fight against cancer in Canada, by giving the Society a percentage of every purchase. Thanks to this program, close to two million dollars were given to cancer research over the years.



THE SAINT-LAMBERT GAMES

OVER \$80,000 FOR THE CAUSE

Last June, more than a hundred people gathered for the 17th edition of the Saint-Lambert Games, an annual family event where participants of all ages challenge themselves and each other in friendly sports competitions. An original initiative launched by Volker Blank, an oncology researcher at the Lady Davis Institute for Medical Research, the Saint-Lambert Games have, since the beginning, raised more than \$80,000 for the Cancer Research Society.

SIGNATURE EVENTS

The Cancer Research Society’s reputation is strong thanks in part to its very popular signature events. These major fundraising events have become gathering places for all who wish to make a difference against the disease, from individuals to corporations and foundations.



CRS CHALLENGE : THE ADVENTURE OF A LIFETIME

With five challenges around the globe in 2017-2018, the CRS Challenge allowed 68 people to join the fight against cancer, by physically pushing their limits. Together, these people have mobilized their networks in order to raise \$870,000 for cancer research. Since its inception, the increasingly popular CRS Challenge program has attracted over a thousand participants and has raised close to 7 million dollars to advance cancer research. For those who have participated, the CRS Challenge is without a doubt, the Adventure of a Lifetime!



5TH URBAN BBQ : 1,000 PARTICIPANTS AND OVER HALF A MILLION DOLLARS RAISED

With its Argentinian theme, the 5th edition of the Urban BBQ raised over half a million dollars, thanks to the record-breaking participation of 1,000 people. Mostly from Montreal’s corporate world, attendees gathered at Windsor Station for this delicious asado inspired by Argentinian cuisine. The menu was elaborated by Chef Ricardo Larrivée and prepared by Chef Marc-André Jetté and his team. As the Society’s spokesperson, Stéphane Rousseau acted as MC alongside Ricardo, to ensure an atmosphere rich in flavour and colour!



THE CYCLO-GOLF CLASSIC: \$250,000 FOR THE 25TH EDITION

The 25th edition of the Cyclo-Golf Classic took place last August at the Elm Ridge Golf Club. Over 200 golfers and cyclists were present for this special edition, which helped raise a record-breaking amount of \$250,000 net. In addition to golf and cycling, participants enjoyed an exceptional silent auction, raffle and BBQ lunch. In the last 25 years, the Cyclo-Golf Classic has helped raise over 4 million dollars to support cancer research.



THANKS TO OUR VOLUNTEERS

EVERY YEAR, HUNDREDS OF VOLUNTEERS JOIN FORCES WITH OUR TEAM.

Whether in administration, events or fundraising, our volunteers working behind the scenes are essential for the success of the Society’s activities.



AN EXCEPTIONAL YEAR

This past year's accomplishments are the fruit of the synergy that came from a meeting of sectors that traditionally don't come together: researchers, donors of every kind, and members of the community. 2017-2018 is a great example of the essential role the Society plays in bringing together community players into one powerful united front against cancer.

INVESTING
FOR THE
FUTURE

4

NEW SCHOLARSHIPS FOR
THE NEXT GENERATION
OF SCIENTISTS

6

SUSTAINED
SCHOLARSHIPS

RESEARCH



452

FUNDING
REQUESTS

69

NEWLY FUNDED
RESEARCH
PROJECTS

59

SUSTAINED
RESEARCH
PROJECTS

28

STRATEGIC
PARTNERSHIPS,
INCLUDING
13 NEW ONES

COMMUNITY INVOLVEMENT

+ 500



VOLUNTEERS

+ 3,000



PARTICIPANTS

+ 200



RESEARCH TEAMS
FROM ONE OCEAN
TO THE OTHER

230,000



DONORS
FROM COAST
TO COAST

INVESTMENTS IN 2017-2018

+ \$16.5 M



CAUSES AND
PREVENTION
\$2,738,443



DETECTION
\$3,098,819



TREATMENTS
\$10,665,445

SINCE
2000

+ \$150
MILLION
INVESTED
IN RESEARCH

2017-2018 FINANCIAL ACTIVITIES

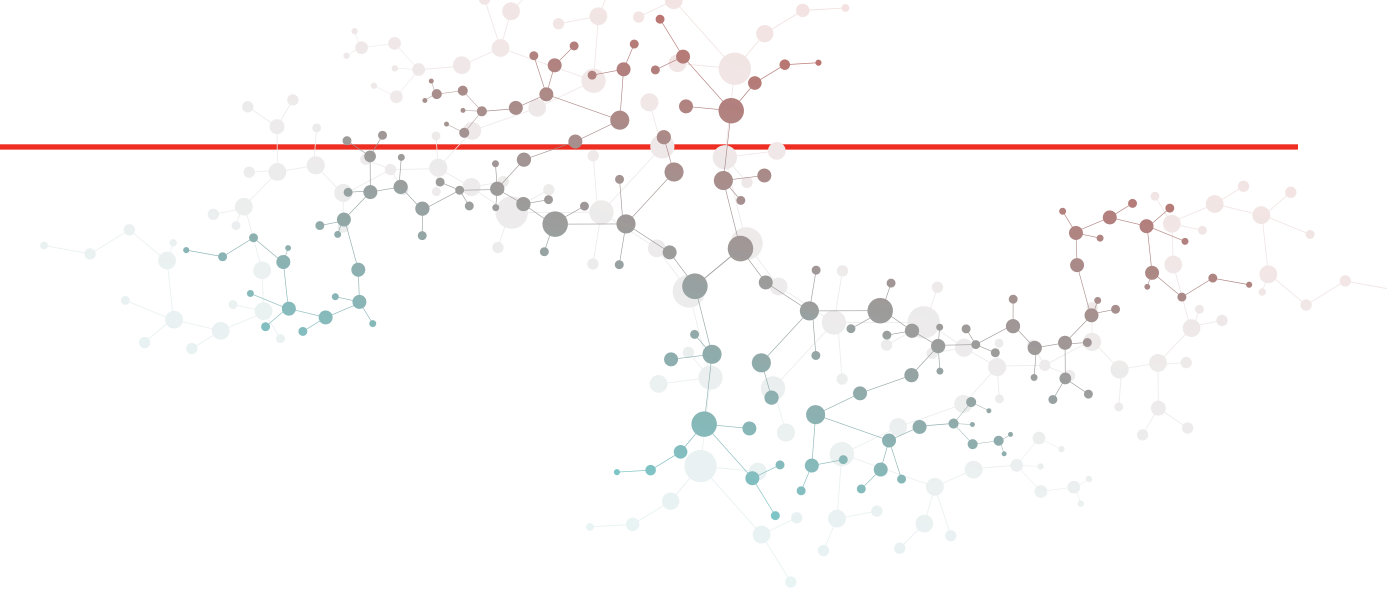
The financial statements for the fiscal year ended on August 31, 2018 outline an exceptional year at all levels for the Society. With a 52% revenue increase, the Society was able to improve its research investments by 41% over the previous year. This success is due to the major increases in partnership revenue (162%) and in donations revenue (24%), but it is also the result of a rigorous management of the funds placed at our disposal.

This statement shows a strong financial health that should propel the Society towards the strategic goals set out for the coming years.

FINANCIAL OPERATIONS AS OF AUGUST 31

(AMOUNTS EXPRESSED IN THOUSANDS OF DOLLARS)

REVENUE	2018 TOTAL \$	2017 TOTAL \$
Annual campaigns	15,315	12,336
Major and planned gifts	3,779	2,188
Fundraising events and other	2,411	2,138
Partnerships - contributions to research	7,190	2,745
Investment income, Realized	1,419	1,024
Investment income, Unrealized	1,072	34
	31,186	20,465
EXPENSES		
Annual campaigns	8,034	5,902
Major and planned gifts	170	296
Fundraising events and other	1,145	1,039
Administration	1,347	1,479
Amortization of property, equipment and software	85	41
	10,781	8,757
EXCESS AVAILABLE FOR RESEARCH	20,405	11,708
RESEARCH GRANTS AND FELLOWSHIPS (including related administrative expenses)	16,502	11,744
(DEFICIENCY) EXCESS OF REVENUE OVER EXPENSES	3,903	(36)



FINANCIAL POSITION AS OF AUGUST 31

(AMOUNTS EXPRESSED IN THOUSANDS OF DOLLARS)

ASSETS - CURRENT ASSETS	2018 TOTAL \$	2017 TOTAL \$
Cash	3,131	2,985
Accounts receivable	177	106
Prepaid expenses	185	197
Other assets	75	87
	3,568	3,375
Investments	31,817	28,341
Property, equipment and software	307	187
	35,692	31,903
LIABILITIES - CURRENT LIABILITIES		
Accounts payable and accrued liabilities	369	500
Deferred contributions	678	818
	1,047	1,318
Lease inducement	157	-
	1,204	1,318
FUND BALANCES		
Restricted funds	10,165	4,645
General funds	24,323	25,940
	34,488	30,585
	35,692	31,903

OUR COLLABORATORS

Each year, the Cancer Research Society joins forces with other organizations across Canada in order to drive cancer research forward. These collaborations allow for the financing of a greater number of innovative projects with greater impact. We warmly thank our partners who are at the heart of the Society's success this year.

COLLABORATORS		
<ul style="list-style-type: none">AligoAtlantic Cancer Research InstituteBeatrice Hunter Cancer Research InstituteBergeron-Jetté FoundationBioCanRxBladder Cancer CanadaBreast Cancer Society of CanadaC17 CouncilCancer de l’ovaire CanadaCancerCare Manitoba FoundationCentre hospitalier pour enfants de l’Est de l’OntarioChaire de recherche Environnement – Cancer Guzzo en partenariat avec l’Université de MontréalElekta	<ul style="list-style-type: none">Exactis InnovationFondation cancer du sein du QuébecFondation CUREFondation de la recherche en santé du Nouveau-BrunswickFonds de recherche du Québec - SantéGénome QuébecImmune BiosolutionsInstitute of Cancer Research of the Canadian Institutes for Health ResearchIR&TIRICoRKatana BiopharmaLa division d’épidémiologie de la Société de recherche sur le cancer à l’Université McGillMEDTEQ	<ul style="list-style-type: none">Merck CanadaMinistère de l’Économie, de la Science et de l’Innovation du QuébecMyeloma CanadaOncopolePancreatic Cancer Canada FoundationProcure BiobankPROMPTThe Ottawa Hospital FoundationThe Ottawa Hospital Research InstituteTransferTech SherbrookeTransMedTech Institute

CORPORATE DONORS AND FOUNDATIONS

\$ 100,000 AND MORE
<ul style="list-style-type: none">Lemaire Family FoundationMirella and Lino Saputo foundationRBC Royal Bank / RBC Foundation / RBC Private BankingRead for the Cure Foundation

\$ 25,000 TO \$ 99,999
<ul style="list-style-type: none">Bell CanadaBMO Bank of Montreal / Cancer Research SocietyCN employees’ and pensioners’ Community FundFondation charitable Maud et Christina DuncanMcKesson CanadaScotia BankServices de cartes DesjardinsTeam TELUS Cares

\$ 10,000 TO \$ 24,999
<ul style="list-style-type: none">Alre PropertiesApotex CanadaBenevityCominarDavies Ward Philips & Vineberg FoundationDeschênes GroupDunton Rainville BarristersFelicia and Arnold Aaron FoundationHoland Automotive GroupLa Cordée Plein AirLassonde Industries

<ul style="list-style-type: none">Le Groupe MauriceLes Développements du CanalPharmascienceRichterSecam InternationalSNC-LavalinSobeys National Pharmacy GroupStrategic Charitable Giving FoundationSunlife financial CanadaTilmar InternationalUnifoodUrban Bonfire

\$ 5,000 TO \$ 9,999
<ul style="list-style-type: none">Apollo MicrowavesAssociation of Registered Interior Designers of OntarioAu Vieux DuluthAuropharmaBanks and Clients PLCBCFBDO CanadaBédard RessourcesCedarome CanadaCGICIBCCorealis PharmaCrowe Bessner Gallay KreismanDeloitte Business Management ConsultantsDorel IndustrieseXplorance

<ul style="list-style-type: none">F. MénardFasken Martineau DumoulinFondation Céline & Jacques LamarreFondation Gisèle et Charles YoungGowling WLGGroupe DesgagnésGroupe MachIvanhoé-CambridgeJCB General ContractorsKPMGLa Belle et La BoeufLiloMiller ThomsonOmni Brokerage GroupOsler, Hoskin & HarcourtRaymond Chabot Grant ThorntonRobicRodeo FXRogers CommunicationsSaryl & Stephen Gross Family FoundationSpiegel SohmerTD Bank /TD Commercial Banking Services / TD Asset ManagementTeva CanadaThe Charles Nordcliffe Baker & Thelma Scott Baker FoundationThe Luigi Liberatore FoundationTidanVela studioWellington LaboratoriesWestmount Gallery
--

\$ 1,000 TO \$ 4,999
<ul style="list-style-type: none">0956267 B.C Unlimited Liability CompanyA5 HospitalityABC Pest Control and ExterminationAbilis SolutionsAbundance CanadaAD DisplayAddenda CapitalAll Charities CampaignAltus GroupAluminium Labelle 2000American Society of PlumbingAqueduct FoundationAvila Investments LtdAxis LightingAXXELBarrage CapitalBeauchemin InternationalBeaulieu Vision CareBlain Joyal Charbonneau Comptables agréésBlake, Cassels & GraydonBlakelyBlueShore FinancialBofiq - Les 3 BrasseursBord’Elle Bar & EateryBorden Ladner GervaisBravi RestaurantBrettler Mintz FoundationCAD Railway IndustriesCanaropa (1954)Caprea Real Estate Advisory and AppraisalCaprion BiosciencesCarlton CardsCentral Motor ServiceCercle Filles d’Isabelle # 715Cercle MGR PoissantChicago Title Insurance Company CanadaCity of GaspéClub d’Age d’Or Ste-GermaineCN Railroaders in the communityComité de Pastorale du Manoir Lauré-GaudreaultComité Loisirs Camping La Clé des ChampsCommission scolaire des Samares pour le pavillon de l’argileConstructions Eugène RodrigueCree Nation of MistissiniDayus Register & GrilleDelmar InternationalDentons CanadaDevamc CanadaDiamond ProductionsDorssersDoug & Gloria MacDonald FoundationDr. R. Brassard M.D.Dr. A. Benoit & Dr R. ProulxDr. Manon Charbonneau MDDr. Monique LetellierEmerald Technology GroupEnglobeES SportsEsther and Bernard Besner Family FoundationFCTFednavFelix Mundi ConsultantsFirst Quebec HoldingsFondation de la famille Claudine et Stephen Bronfman

<ul style="list-style-type: none">Fondation du fond de notre cœur (Carrousel)Fondation Hormisdas PilonFondation PillenièreFondation St-Hubert-MontmagnyFonds de bienfaisance CanadaFoundation of Greater MontrealFrances & David Rubin FoundationFrenza Groupe FinancierFundScripGascon and AssociatesGerjotinGestion avantages sociaux QuébecGestion CasavantGestion MeliasGestion Rosaire G. DubéGLT+Greg Media LabGrenier GagnonGrivapete HoldingsGroupe BrosseauGroupe Financier HorizonsGroupe Immobilier PertelGroupe MadisonGroupe Sani MarcGroupe ZiboHotel Espresso MontrealHy BloomIBM Canada Employees’ Charitable FundIMKT Direct Solutions Corp.Imports DragonIndustrial AllianceInveraInvestissements CzyboIpso FactoJ. S. Cheng & PartnersJAMP PharmaJewish Community Foundation of MontrealJohn F. Quinney Family FoundationKD SERVICESKen and Roma Lett FoundationKonica MinoltaLapointe Rosenstein Marchand MelançonLaurent Viger ConstructionLCO Construction and ManagementLes Agences de Meubles Alain BoisvertLes Augustines de la Miséricorde de JésusLes Missionnaires Oblates De St-BonifaceLevy PilotteLG2LHH KnightsbridgeLogistec CorporationLumira CapitalM. P. B.Manulife Real EstateMark Motors of OttawaMazars Harel DrouinMC FinanceMercan CapitalMFCI CapitalMinicucci ArchitecteMNPMono Serra GroupMontreal Neon SignsMSC CanadaNAPECNATIONAL Public RelationsNexia FriedmanNorton Rose Fulbright

<ul style="list-style-type: none">OEK MontrealOPM ProsOptimé InternationalOptimum TalentOtera CapitalPitsas ArchitectsPlacements C.D.F.G.PPUPrevost NotariesPricewaterhouseCoopers.Private Giving FoundationProaction InternationalProdenPro-Jet DemolitionPromerita Financial Corp.PSB BoisjoliPyro-AirQuadra PlastQuebec Cancer FoundationQuébec InternationalRE/MAX PrivilègeReliance Construction GroupRemorquage Groupe LabergeRosetown Farming Co.Royal Canadian Legion - 158 #Royal Canadian Legion - 212 #Royal Trust CompanyS F MarketingS.T. MaçonnerieSavaria Landscape ProductsSchwartz Levitsky FeldmanSecuriumServantes de Notre-Dame Reine du ClergéSicolaSociété médicale Alain RoySoeurs Sainte-MarcellineSpinelli ToyotaStikeman ElliottTechbanxTelesystemTeralys CapitalThe Alfid GroupThe PersonalThomas Fruits et LégumesTKNL Experience MakersToronto FoundationTotally Nuts & moreTrac-World Freight ServicesTrade Office of Peru - OCEx TorontoTransport Sylvester & ForgetTrudel ImmeublesTVA productions IIUnited Way / Centraide of OttawaUnited Way of Greater TorontoUnited Way of York RegionVictoria FoundationVideoville ShowtimeWazo FurnitureWyalta Resources

INDIVIDUAL DONORS

Over 230,000 individuals supported the Society in the last year, including at least 30,000 new donors. Thank you for your trust and commitment to our cause.

FUNDS

Research or memorial funds represent a meaningful and tangible way to perpetuate the memory of a loved one, or to highlight a unique contribution to the Society’s work.

WE THANK ALL THOSE WHO HAVE SUPPORTED RESEARCH THIS YEAR THROUGH THE FOLLOWING FUNDS:

- R. Howard Webster Foundation
- Ann Matyas Memorial Fund
- Charlotte Légaré Memorial Fund
- Isaiah 40:31 Memorial Fund
- Kathryn Jeanne Randle Memorial Fund
- Rina Primeau Memorial Fund
- Rob Lutterman Memorial Fund
- Andy & Léna Chabot Research Fund
- Benoit Gagnon Research Fund
- Daniel Primeau Research Fund
- Ganotec/Marc-André Pigeon Research Fund
- Jean Doré Research Fund
- Marjolaine Bazinet – Michel Caya Research Fund
- Solidaire pour la recherche
- Douglas Brian Shapiro Fonds
- Fonds environnement-cancer

BEQUESTS

Bequests represent a significant legacy for future generations. During the past fiscal year, the Society received over 3 million dollars in form of testamentary donations. We are deeply touched by these altruistic gestures which testify to the donors’ will to offer a better world to future generations.

- | | |
|----------------------------|------------------------|
| • Carl Baum | • Lloyd Douglas Wilcox |
| • Thérèse Bourgoin | • Dorothy Denise Wood |
| • Madeleine Jean Buxton | |
| • Lise Cabana | |
| • Herbert James Davies | |
| • Gaétan Deschamps | |
| • Marjorie Joan Fobin | |
| • Claire Gélinas | |
| • Carmen Giguère | |
| • Theodora Jamieson | |
| • Norma Kamin | |
| • Monique Lavoie | |
| • Lucille Lavigne | |
| • Kenneth Angus MacKenzie | |
| • Pauline Martineau | |
| • Norma Jean McLean | |
| • Joan Marie Mitchell | |
| • Joyce Muriel Nichols | |
| • George William Procunier | |
| • Helen Dorothy Saunders | |
| • Janet Seale | |
| • Edelbert Tetzlaff | |
| • Keith Frederick Wigget | |

THE BOARD OF DIRECTORS



MARTIN THIBODEAU
CHAIRMAN OF THE BOARD



PHILIPPE P. HUNEULT
VICE-PRESIDENT



HEIDI LANGE, CRHA
SECRETARY



KATIA MARQUIER, CPA, CA
TREASURER

ADMINISTRATORS



SERGES BÉRIAULT
MBA



BENOÎT DUROCHER



MIKE G. BOUCHARD



FRANÇOIS PAINCHAUD



ANNIE LEMIEUX



DOROTHY QUANN



MONIQUE MERCIER
AD. E.



GEORGE ZOGOPOULOS
MD. PHD. FRCSC, FACS



RENÉ DOUVILLE



JOANNA WILSON



Cancer
Research Society

625 President-Kennedy Avenue, Suite 402
Montreal, Quebec H3A 3S5

Phone: 514 861-9227
Toll-Free: 1 888 766-2262

CancerResearchSociety.ca
info@src-crs.ca